



# MODEL PS125-7

HDPS-0720-0699

## RATIO TABLE AND IDENTIFICATION

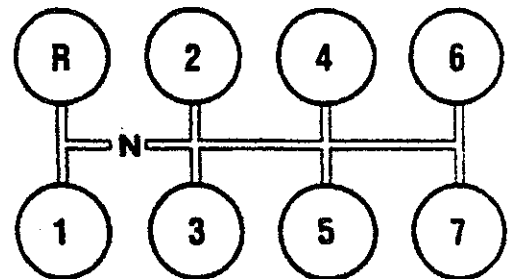
### CONTENTS

RATIO TABLE .....	FC
GEARS and RELATED PARTS .....	1-5
DRIVE GEAR GROUP .....	1
DRIVE GEAR TABLE .....	1
MAINSHAFT GROUP .....	2-3
COUNTERSHAFT GROUP .....	4-5
REVERSE IDLER SHAFT GROUP .....	4-5
DRIVE GEAR BEARING CAP GROUP .....	6-7
CASE GROUP .....	6-7
REAR CASE, REAR BEARING CAP and RELATED PARTS .....	8-9
SHIFTER HOUSING ASSEMBLY—CENTER CONTROL .....	12-13
SHIFTER HOUSING ASSEMBLY—FORWARD CONTROL .....	10-11
REMOTE CONTROL ASSEMBLY .....	14-15
CLUTCH HOUSING DIMENSIONS .....	16
SHIFT LEVER and DOME ASSEMBLY .....	17
CLUTCH RELEASE CODE TABLE .....	18-19
COMPANION FLANGES and END YOKES .....	20
SERVICE PARTS OVERHAUL KITS—MAJOR and MINOR .....	22-23
TABULATED BILLS OF MATERIAL .....	24-27

**RATIO TABLE**

SPEEDS	MODELS	
	PS125-7B	PS140-7A
1st	12.266	10.13
2nd	7.000	5.99
3rd	4.133	3.56
4th	2.541	2.57
5th	1.840	1.84
6th	1.335	1.33
7th	1.000	1.00
Rev.	12.266	10.13

**SHIFT PATTERN**



**IDENTIFICATION**

The Name Plate (NP-96) affixed to the RIGHT side of the Transmission is stamped with information:

In requesting more information on these transmissions, please furnish this information.

SERIAL

B/M No.  MODEL

Abbreviations used in this parts list include:

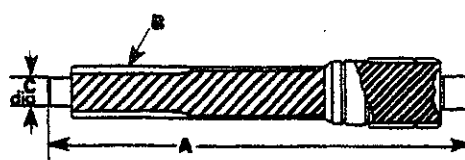
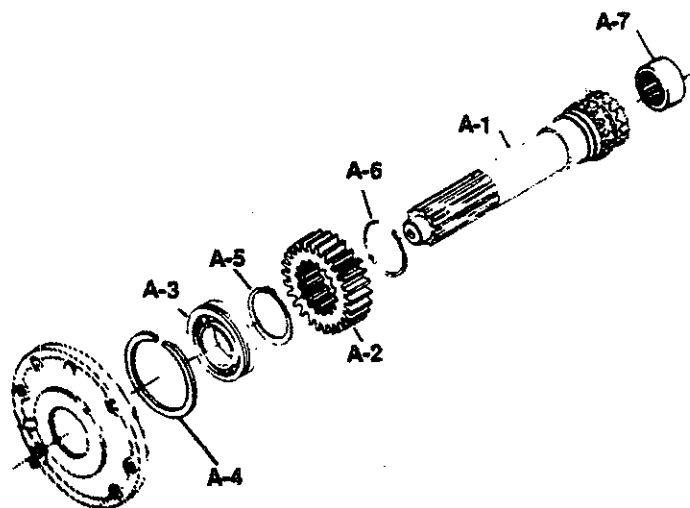
- N.S. — Not Shown
- N.S.S. — Not Sold Separately
- N.R. — Not Required
- A.R. — As Required

# MODEL PS125-7

## GEARS AND RELATED PARTS

HDPS-0720-0699

Ref. No.	Part Number	Part Description	Qty.
A-1	96-35-102-1X*	<b>Drive Gear Group (See tab bills for applicable drive gear)</b>	
	97-35-105-1X*	Input Shaft—2.000"-10 #306 pilot .....	1
	97-35-106-1X*	Input Shaft—1.750"-10 #306 pilot .....	1
A-2	97-36-1-1X*	Input Shaft—1.750"-10 #205 pilot .....	1
	97-36-3-1X*	Gear—Mainshaft Drive (28T) (For PS140-7) .....	1
A-2	97-36-1-1X*	Gear—Mainshaft Drive (24T) (For PS125-7) .....	1
	97-36-3-1X*		
A-3	550992	Bearing—Drive Gear/Input Front .....	1
A-4	97-381-41	Snap Ring—Input Shaft Bearing Cap Retaining .....	1
A-5	97-381-42	Snap Ring—Input Shaft Front Bearing Retaining .....	1
A-6	97-381-44	Snap Ring—Input Shaft Drive Gear .....	1
A-7	550953	Bearing—Drive Gear/Input Shaft Pocket Roller .....	1



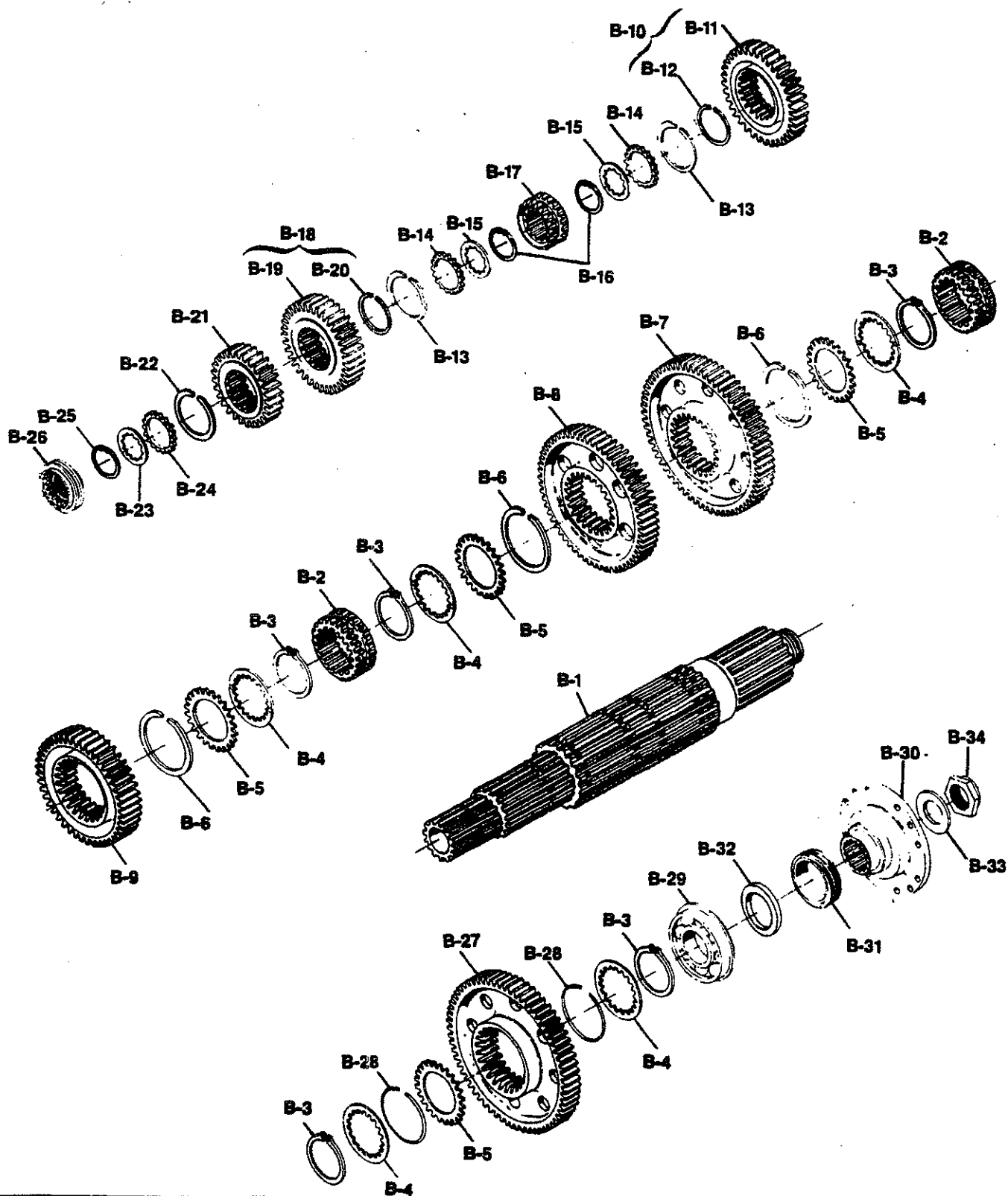
**DRIVE GEAR TABLE**

A LENGTH	B SPLINE DIA. TEETH	C PILOT SIZE	SAE NO.	INPUT SHAFT PART NO.	SERVICE WITH
15.020"	2.000"-10	1.180"	306	97-35-102	97-35-102-1X*
15.020"	1.750"-10	1.180"	306	97-35-105	97-35-105-1X*
15.020"	1.750"-10	.983"	205	97-35-106	97-35-106-1X*

\* Includes (1) each Snaps Rings 97-381-44 and 97-381-42

PARTS LISTED IN THIS CATALOG MAY NO LONGER BE AVAILABLE, USE WITH TRANSMISSION SUPERSEDING LIST.

# MODEL PST25-7 GEARS and RELATED PARTS



# MODEL PS125-7

## GEARS AND RELATED PARTS

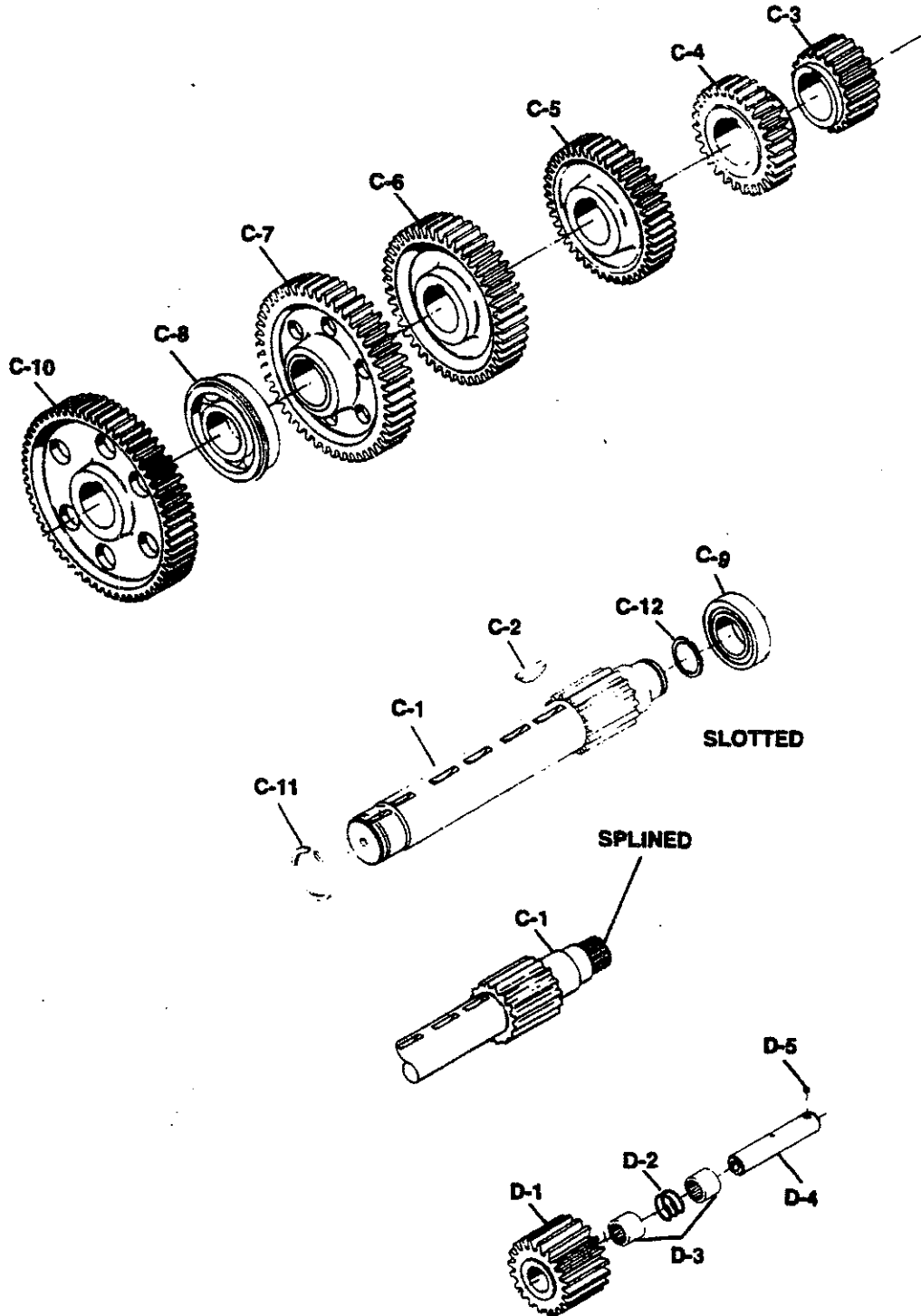
HDPS-0720-0699

Ref. No.	Part Number	Part Description	Qty.
		<b>Mainshaft Group</b>	
B-1	97-362-67	Mainshaft	1
B-2	97-465-59	Clutch Collar—1st, Reverse, 2nd and 3rd Mainshaft (48T)	2
B-3	98-381-1	Snap Ring—External—Large	5
B-4	330959	Thrust Washer—Internal—Large (48T)	5
B-5	330810	Thrust Washer—External—Large (24T)	4
B-6	98-381-2	Snap Ring—Internal—Large	3
B-7	97-8-113	Gear—1st (64T)	1
B-8	97-8-134	Gear—2nd (58T) (For PS140-7)	1
	97-8-209	Gear—2nd (56T) (For PS125-7)	1
B-9	97-8-136	Gear—3rd (48T) (For PS140-7)	1
	97-8-211	Gear—3rd (46T) (For PS125-7)	1
B-10	97-8-235-1X	Gear—4th (40T) (For PS140-7)	1
	97-8-238-1X	Gear—4th (38T) (For PS125-7)	1
B-11	N.S.S.	Gear—4th	1
B-12	97-381-43	Snap Ring—4th Gear Internal Stop	1
B-13	97-381-1	Snap Ring—Internal—Small	2
B-14	330814	Thrust Washer—External—Small (20T)	2
B-15	330960	Thrust Washer—Internal—Small (36T)	2
B-16	97-381-45	Snap Ring—External—Small	2
B-17	97-465-56	Clutch Collar—4th and 5th Mainshaft (20T)	1
B-18	97-8-234-1X	Gear—5th (34T) (For PS140-7)	1
	97-8-237-1X	Gear—5th (32T) (For PS125-7)	1
B-19	N.S.S.	Gear—5th	1
B-20	97-381-43	Snap Ring—5th Gear Internal Stop	1
B-21	97-8-232	Gear—6th (24T) (For PS140-7)	1
	97-8-236	Gear—6th (26T) (For PS125-7)	1
B-22	97-381-2	Snap Ring—Internal	1
B-23	330961	Thrust Washer—Internal (22T)	1
B-24	330806	Thrust Washer—External (17T)	1
B-25	97-381-46	Snap Ring—External	1
B-26	97-465-57	Clutch Collar—6th and 7th Mainshaft	1
B-27	97-8-182	Gear—Reverse (64T)	1
B-28	97-381-32	Snap Ring—Internal—Large	2
B-29	550925	Bearing—Rear	1
B-30	See Tab Bills	Flange or End Yoke—U-Joint (See chart on page 20)	1
B-31	See Tab Bills	Speedometer Drive Gear/Electronic Signal Gear	1
or	97-37-34	Spacer (Used in place of Speedometer Gear)	1
B-32	97-37-33	Spacer—Bearing	1
B-33	330734	Flat Washer	1
B-34	545065	Nut—Mainshaft—1 3/4"-16 Self-locking	1

PARTS LISTED IN THIS CATALOG MAY NO LONGER BE AVAILABLE, USE WITH TRANSMISSION SUPERSEDING LIST.

# MODEL PS125-7

## GEARS AND RELATED PARTS



# MODEL PS125-7

## GEARS AND RELATED PARTS

HDPS-0720-0699

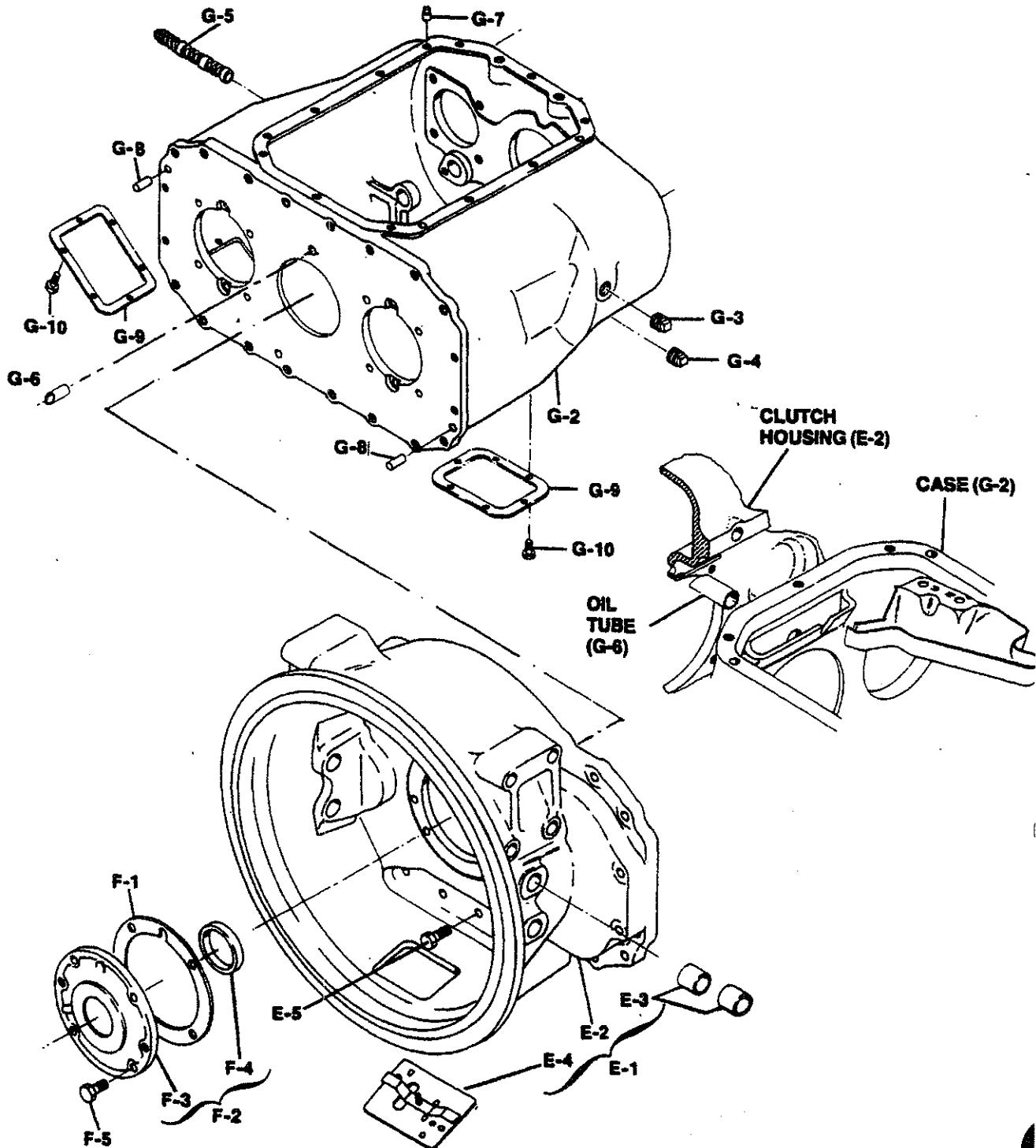
Ref. No.	Part Number	Part Description	Qty.
C-1	97-30-74	<b>Countershaft Group</b> (15T)—Splined for P.T.O.—(Standard location—Right Side) .....	1
	97-30-75	(15T)—Slotted for Pump—(Standard location—Left Side) .....	1
C-2	500010-8	Woodruff Key #29 .....	12
C-3	97-196-92	2nd Gear (23T) (For PS140-7) .....	2
	97-196-154	2nd Gear (23T) (For PS125-7) .....	2
C-4	97-196-19	3rd Gear (32T) (For PS140-7) .....	2
	97-196-32	3rd Gear (32T) (For PS125-7) .....	2
C-5	97-196-95	4th Gear (37T) (For PS140-7) .....	2
	97-196-156	4th Gear (43T) (For PS125-7) .....	2
C-6	97-196-109	5th Gear (44T) (For PS140-7) .....	2
	97-196-158	5th Gear (50T) (For PS125-7) .....	2
C-7	97-196-110	6th Gear (43T) (For PS140-7) .....	2
	97-196-173	6th Gear (56T) (For PS125-7) .....	2
C-8	550031	Bearing—Front .....	2
C-9	550959	Bearing—Rear .....	2
C-10	97-1-50	Drive Gear (57T) (For PS140-7) .....	2
	97-1-56	Drive Gear (69T) (For PS125-7) .....	2
C-11	97-381-30	Snap Ring—Front Bearing Retainer .....	2
C-12	54-381-1	Snap Ring—Rear Bearing Retainer .....	2
		<b>Reverse Idler Group</b>	
D-1	97-5-1	Gear—Reverse Idler (21T) .....	2
D-2	97-37-1	Spacer—Bearing .....	2
D-3	550886	Bearing .....	4
D-4	97-60-1	Shaft—Idler Gear .....	2
D-5	500566-8	Lockball—9/32" .....	2

PARTS LISTED IN THIS CATALOG MAY NO LONGER BE AVAILABLE, USE WITH TRANSMISSION SUPERSEDING LIST.

# MODEL PS125-7

HDPS-0720-0699

## CASE, BEARING CAP AND RELATED PARTS





# MODEL PS125-7

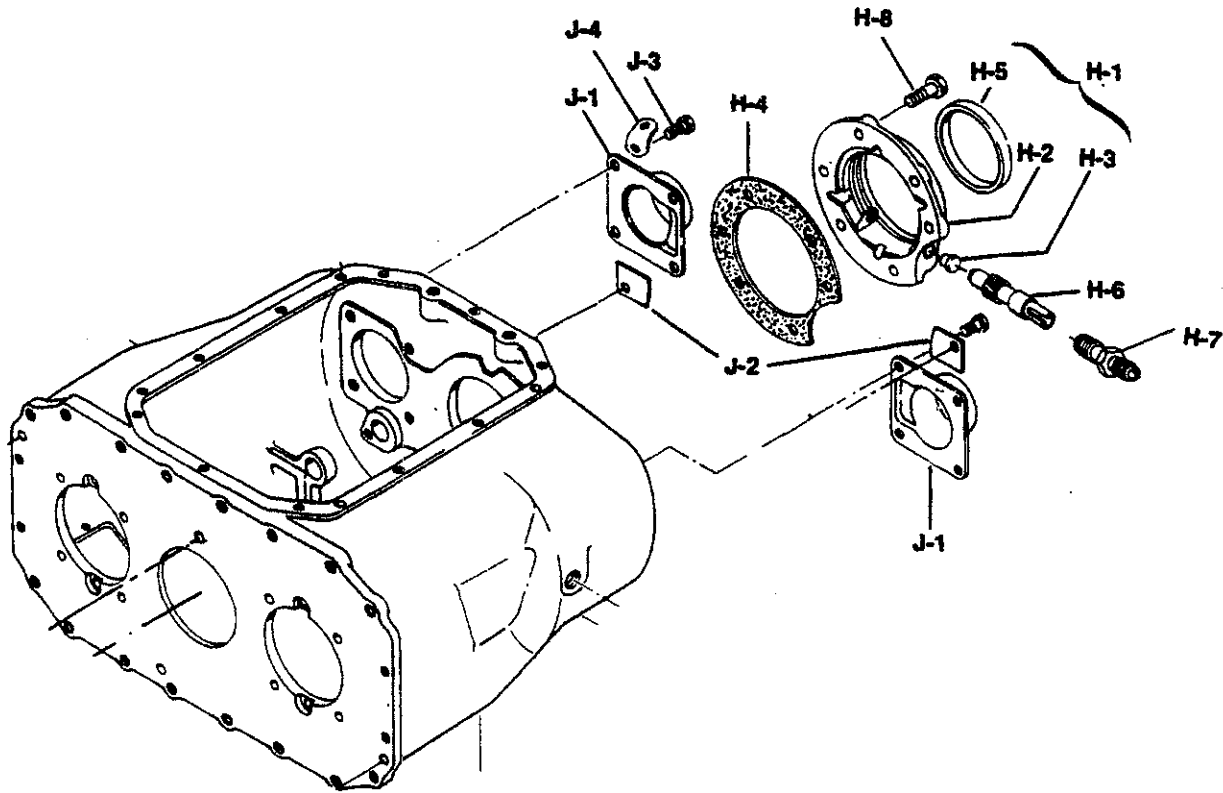
## CASE, BEARING CAP AND RELATED PARTS

HDPS-0720-0699

Ref. No.	Part Number	Part Description	Qty.
<b>Clutch Housing Group</b>			
E-1	See Tab Bills	Clutch Housing Assembly—(See Chart on Page 16)	1
E-2	N.S.S.	Clutch Housing	1
E-3	97-24-8	Bushing—Clutch Release Shaft	4
E-4	97-96-18-1X	Hand Hole Cover Assembly	1
E-5	545008-4	Bolt—5/8"-11 x 2" Hex Head Self-locking	16
and	545103	Bolt—3/8"-16 x 3" Hex Head Self-locking	4
N.S.	330829	Flat Washer—5/8" (For use with Aluminum Housing)	16
N.S.	14-W	Flat Washer—3/8" (For use with Aluminum Housing)	4
<b>Drive Gear Bearing Cap Group</b>			
F-1	97-223-1	Gasket	1
F-2	97-19-52-1X	Bearing Cap and Oil Seal Assembly	1
F-3	N.S.S.	Bearing Cap (Casting #97-19-37)	1
F-4	97-463-36-1X	Oil Seal with Installation Sleeve	1
F-5	545002-4	Bolt—3/8"-16 x 1 1/8" Hex Head Self-locking	4
<b>Case Group</b>			
G-1	See Tab Bills	Case Assembly	1
G-2	N.S.S.	Case	1
N.S.	NP-96	Name Plate	1
N.S.	252-SP	Pin—Name Plate	4
G-3	62-39-3	Filler Plug (Magnetic)	1
G-4	62-39-3	Drain Plug (Magnetic)	1
G-5	97-39-1	Drain Plug (Magnetic)	1
G-6	97-420-4	Tube—Oil Transfer	1
G-7	274-SP	Dowel Pin—(To locate Shifter Housing to Case)	2
G-8	330755	Dowel Pin—(To locate Clutch Housing to Case)	2
G-9	50-267-2	Cover—Six Bolt P.T.O. Aperture	2
G-10	330800	Bolt—3/8"-16 x 3/4"—Flanged Head Self-locking	12

PARTS LISTED IN THIS CATALOG MAY NO LONGER BE AVAILABLE, USE WITH TRANSMISSION SUPERSEDING LIST.

MODEL FS 125-7  
CASE, BEARING CAP AND RELATED PARTS



# MODEL PS125-7

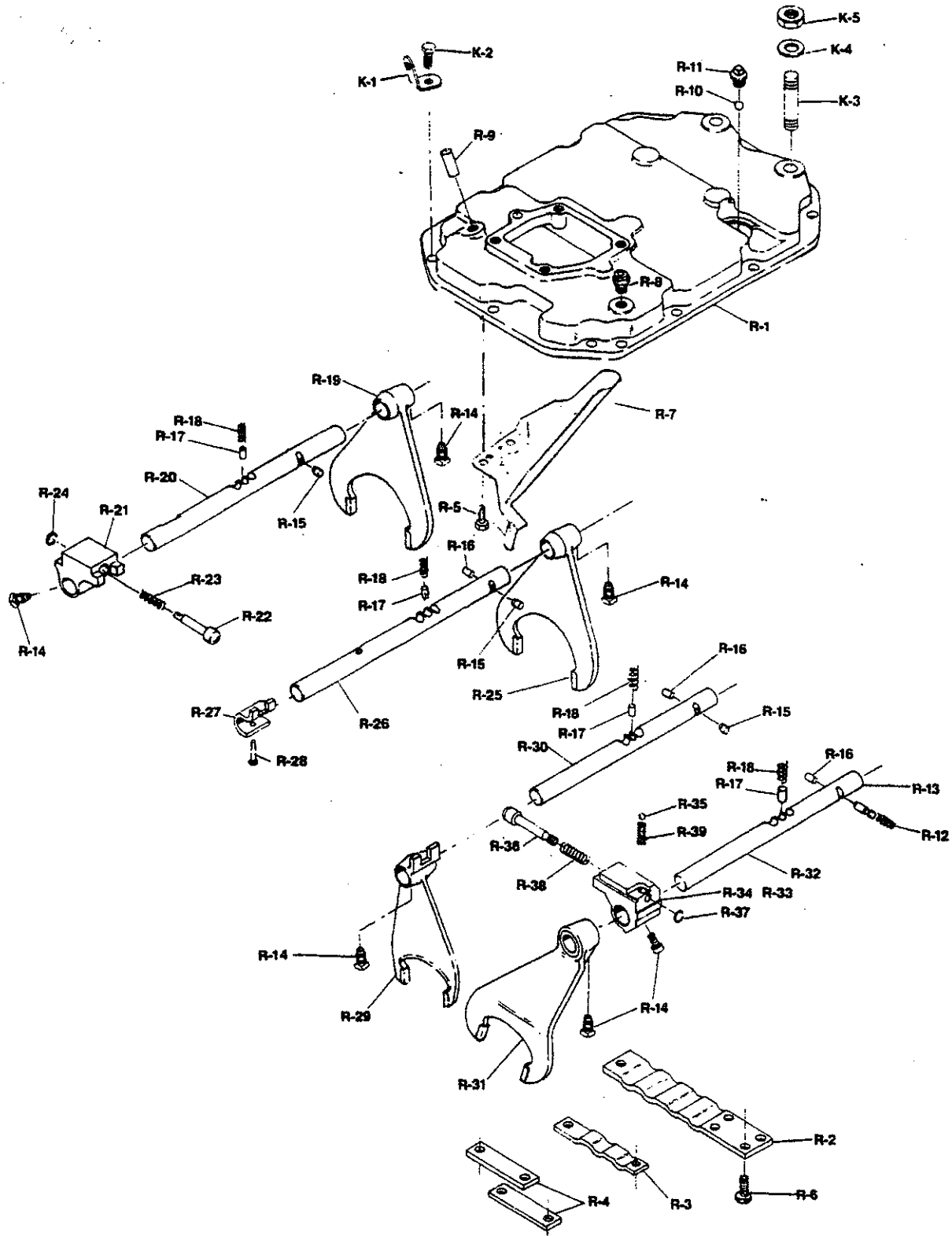
## CASE, BEARING CAP AND RELATED PARTS

HDPS-0720-0699

Ref. No.	Part Number	Part Description	Qty.
<b>Mainshaft Rear Bearing Cap—(For Gear Driven Speedometer)</b>			
H-1	97-19-53-1X	Bearing Cap, Bushing, Gasket, and Oil Seal Assembly	1
H-2	N.S.S.	Bearing Cap	1
H-3	60-475-1	Bushing—Speedometer	2
H-4	97-223-2	Gasket	1
H-5	98-463-1	Oil Seal	1
N.S.	545021	Plug—Electronic Speedometer/Cruise	2
H-6	See Tab Bills	Gear—Speedometer Driven	1
N.S.	55-334-1	Plug—(Used without Speedometer Gear)	1
H-7	55-454-1	Sleeve—Speedometer Driven Gear	1
H-8	545001-4	Bolt—1/2"-13 x 1 1/2" Hex Head Self-locking	4
and	545001-8	Bolt—1/2"-13 x 2 1/2" Hex Head Self-locking	2
<b>Mainshaft Rear Bearing—(For Electronic Speedometer)</b>			
H-1	97-19-53-1X	Bearing Cap, Bushing, Gasket, and Oil Seal Assembly	1
H-2	N.S.S.	Bearing Cap	1
H-3	60-475-1	Bushing—Speedometer	2
H-4	97-223-2	Gasket	1
H-5	98-463-1	Oil Seal	1
N.S.	545021	Plug—Electronic Speedometer/Cruise	2
N.S.	55-334-1	Plug—Speedometer Outlet	1
H-8	545001-4	Bolt—1/2"-13 x 1 1/2" Hex Head Self-locking	4
and	545001-8	Bolt—1/2"-13 x 2 1/2" Hex Head Self-locking	2
<b>Countershaft Rear Bearing Cap Group</b>			
J-1	97-22-23	Cap—Countershaft Rear Bearing	2
J-2	97-96-23	Cap—Reverse Idler	2
J-3	545015	Bolt—3/8"-16 x 15/16" Flanged Head Self-locking	10
J-4	330564-1	Lift Hook	2
N.S.	545056	Anaerobic Sealant	A/R
<b>Countershaft Rear Bearing Cap Group with PTO Oil Pump</b>			
N.S.	313292	PTO Oil Pump Assy.	1
N.S.	97-22-21	Countershaft Rear Bearing Cap Pump Mounting (usually on left side)	1
N.S.	70-223-25	Countershaft Oil Pump Mounting Gasket	1
J-1	97-22-23	Cap - Countershaft Rear Bearing (usually on right side)	1
N.S.	97-223-22	Gasket - Countershaft Rear Bearing Cap	2
J-3	545015	Bolt - 3/8"-16 x 15/16" Flanged Head Self-locking (for 97-22-23 cap)	4
N.S.	545002-6	Bolt - 3/8"-16 x 1.250" Flanged Head Self-locking (for 97-22-21 cap)	4
N.S.	545051	Elbow - Pump Inlet 90 Deg.	1

PARTS LISTED IN THIS CATALOG MAY NO LONGER BE AVAILABLE, USE WITH TRANSMISSION SUPERSEDING LIST.

MODEL FS123-7  
FORWARD CONTROL



# MODEL PS125-7

## SHIFTER HOUSING ASSEMBLY FORWARD CONTROL

HDPS-0720-0699

Ref. No.	Part Number	Part Description	Qty.
		PARTS SHOWN ARE FOR SERVICE PART # 97-16-100-3X. SOME PRODUCTION UNITS HAD 97-16-100-2X WHICH HAS NO SAFETY SWITCH PROVISION. PARTS BELOW ARE FOR BOTH SHIFTER HOUSINGS EXCEPT AS NOTED WITH **	
R-1	See Tab Bills 97-16-100-1X N.S.S.	Shifter Housing Assembly ..... 97-16-100-3X	1
R-2	97-360-9	Shift Housing, Oil Trough, and Shift Rod Retainers	1
R-3	97-360-10	Shift Housing	1
R-4	97-360-11	Retainer—Shift Rod (Rear)	1
R-5	545125-2	Retainer—Shift Rod (Center)	1
R-6	545125-1	Retainer—Shift Rod (4th,5th,6th & 7th) (Front)	2
R-7	97-468-2	Screw—Oil Trough—3/4"-16 x 3/4" Self Tapping	2
R-8	312268	Screw—Shift Rod Retainers (1.00" long) Self Tapping	9
R-9	330739-1	Oil Trough	1
** R-10	50-80-4	Breather	1
R-11	545021	Pin—Back-up Light	1
** R-12	97-72-31	Ball—Neutral Safety Switch (not used in 97-16-100-2X)	1
** R-13	97-438-25	Plug—Neutral Safety Switch	1
R-14	545063	Spring—Interlock Neutral Safety Switch (not used in 97-16-100-2X)	1
R-15	97-12-5	Plunger—Neutral Safety Switch (not used in 97-16-100-2X)	1
R-16	194-SP	<b>For All Shift Forks, Brackets and Rod Groups</b>	
R-17	85-438-1	Screw—7/16"-20 x 3/4" Socket Head	6
R-18	97-72-11	Interlock—Shift Rod	3
R-19	97-66-53	Pin—Interlock (only (2) req'd. in 97-16-100-2X)	3
R-20	97-67-307-1X*	Poppet—Shift Rod	4
R-21	97-354-11	Spring—Shift Rod Poppet	4
R-22	97-438-24	<b>First and Reverse Shift Rod Group</b>	
R-23	97-72-2	Shift Fork	1
R-24	97-381-3	Shift Rod	1
R-25	97-66-110	Shift Rod Bracket	1
R-26	97-67-308-1X*	Plunger—1st and Reverse Shift Bracket	1
R-27	97-354-27	Spring—1st and Reverse Shift Bracket Plunger	1
R-28	545072	Snap Ring—1st and Reverse Shift Bracket Plunger	1
R-29	97-66-55	<b>Second and Third Shift Rod Group</b>	
R-30	97-67-293-1X*	Shift Fork	1
R-31	97-66-120	Shift Rod	1
R-32	97-67-292-1X*	Shift Rod Bracket	1
R-33	97-354-32-1X	Screw—1/4"-28 x 1 3/8" Socket Head	1
R-34	97-354-32	<b>Fourth and Fifth Shift Rod Group</b>	
R-35	50-80-1	Shift Fork	1
R-36	97-438-27	Shift Rod	1
R-37	97-381-47	Shift Rod Bracket Assembly	1
R-38	97-72-32	Shift Rod Bracket	1
R-39	97-72-33	Ball—Shift Bracket Poppet	1
N.S.	545056-5	Plunger—Shift Bracket	1
K-1	330564-1	Snap Ring	1
K-2	545002-4	Spring—Shift Bracket Plunger Pin	1
K-3	330360-15	Spring—Shift Bracket Pilot Pin	1
or	330360-18	<b>Parts Listed Below Are Not Included in Assembly</b>	
K-4	500365-43	Anaerobic Sealant	A/R
K-5	500371-7	Lift Hook	4
		Bolt—3/8"-16 x 1 1/2" Hex Head Self-locking	10
		Stud—5/8"-11 & 5/8"-18 x 3 1/2"	2
		Stud—5/8"-16 & 5/8"-18 x 4"	2
		Washer—5/8" Flat	2
		Nut—5/8"-18	2

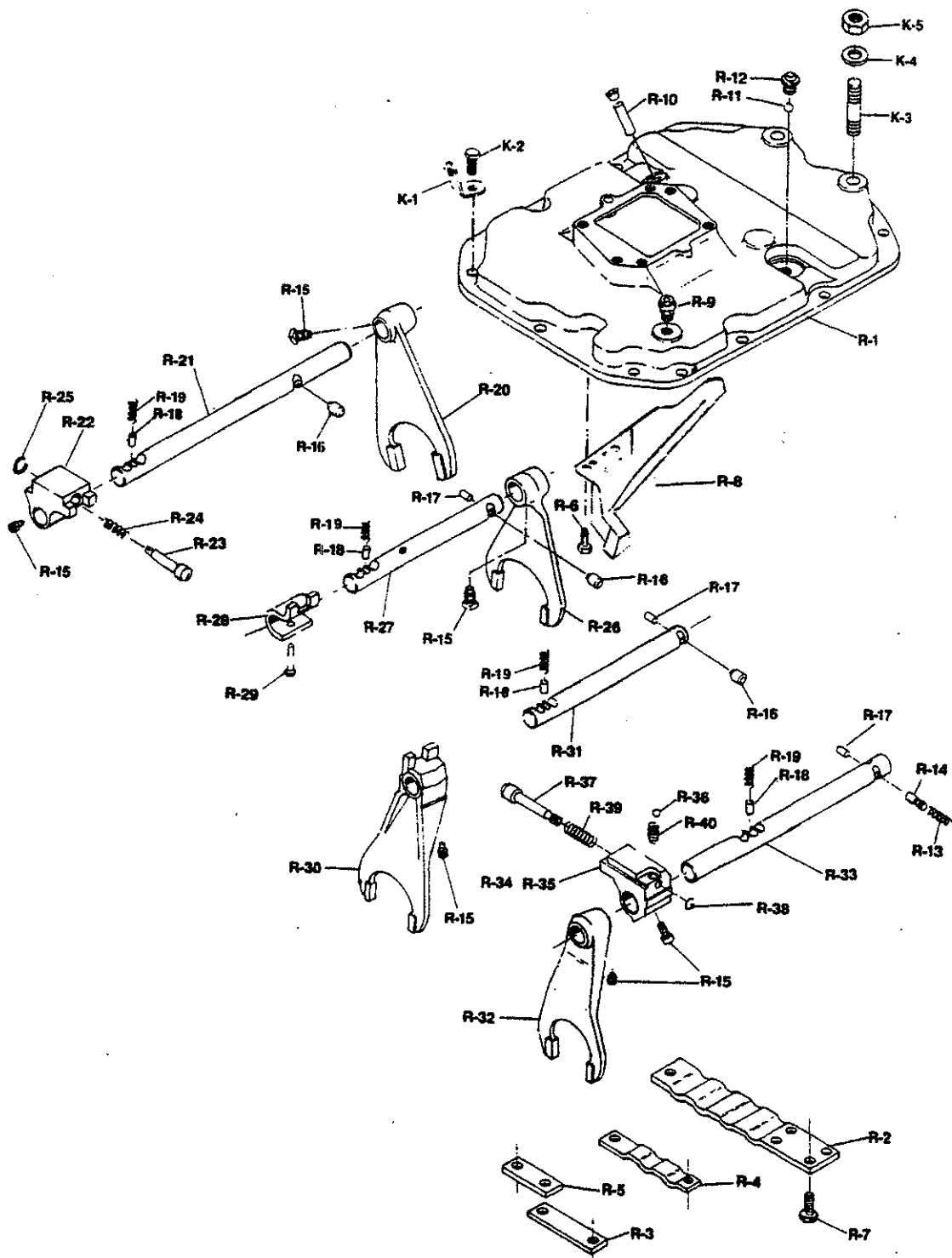
\*Includes (1) each of 85-438-1 and 97-72-11

PARTS LISTED IN THIS CATALOG MAY NO LONGER BE AVAILABLE, USE WITH TRANSMISSION SUPERSEDING LIST.

# MODEL PS125-7

## CENTER CONTROL

HDPS-0720-0699



# MODEL PS125-7

## SHIFTER HOUSING ASSEMBLY CENTER CONTROL

HDPS-0720-0699

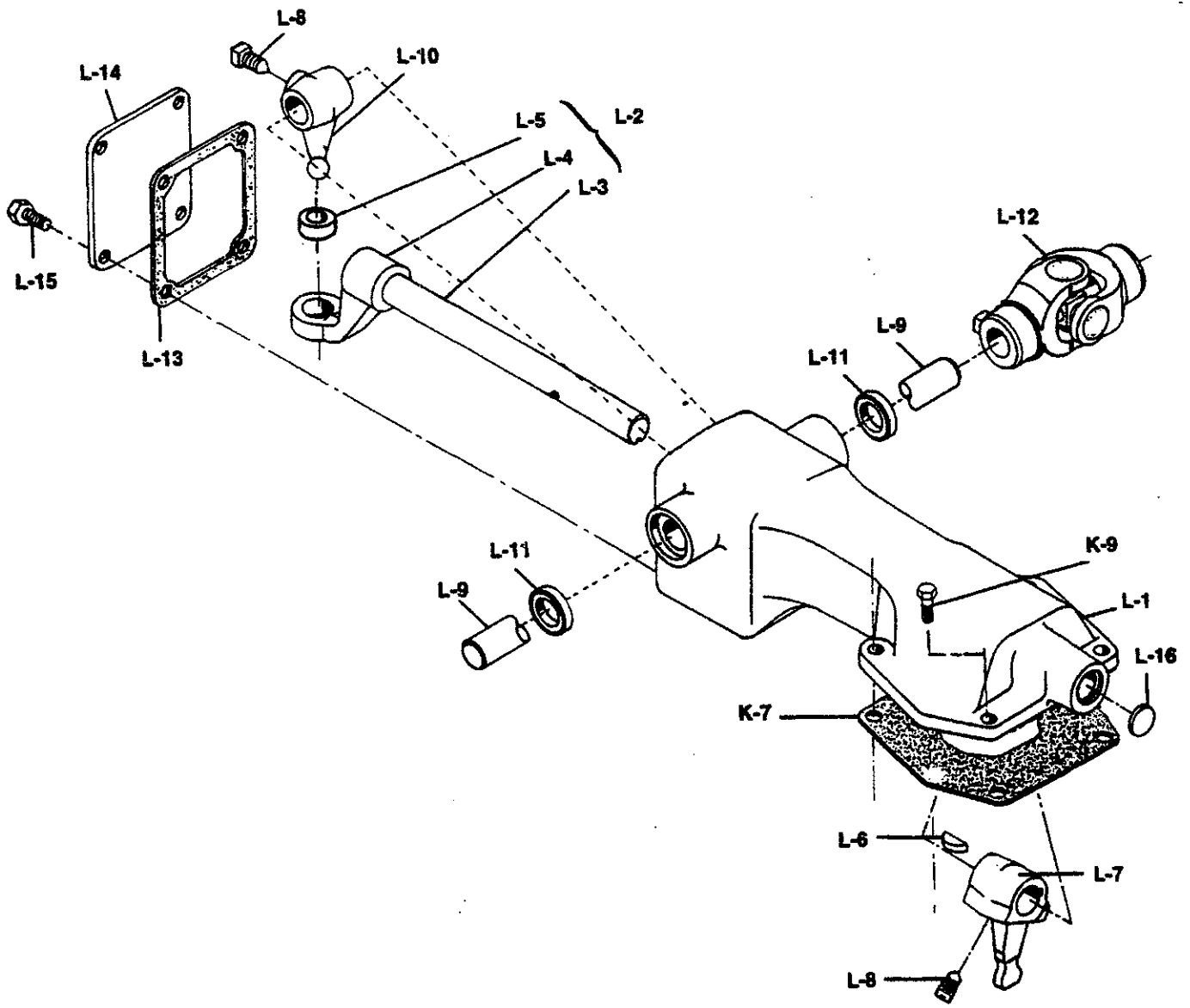
Ref. No.	Part Number	Part Description	Qty.
		PARTS SHOWN ARE FOR SERVICE PART # 97-16-99-3X. SOME PRODUCTION UNITS HAD 97-16-99-2X WHICH HAS NO SAFETY SWITCH PROVISION. PARTS BELOW ARE FOR BOTH SHIFTER HOUSINGS EXCEPT AS NOTED WITH ##	
		<b>Shifter Housing Assembly</b> 97-16-99-3X	1
R-1	See Tab Bills 97-16-99-1X N.S.S.	Shifter Housing, Oil Trough and Shift Rod Retainers	1
R-2	97-360-9	Shift Housing	1
R-3	97-360-11	Retainer—Shift Rod (Rear)	1
R-4	97-360-12	Retainer—Shift Rod (4th,5th,6th & 7th) (Front)	1
R-5	97-360-13	Retainer—Shift Rod (Center)	1
R-6	545125-2	Retainer—Shift Rod (1st & Reverse) (Front)	1
R-7	545125-1	Screw—Oil Trough	2
R-8	97-468-2	Screw—Shift Rod Retainers (1.00" long)	9
R-9	312268	Oil Trough	1
R-10	330739-1	Breather	1
## R-11	50-80-4	Pin—Back-up Light	1
R-12	545021	Ball—Neutral Safety Switch (not used in 97-16-99-2X)	1
## R-13	97-72-31	Plug—Neutral Safety Switch	1
## R-14	97-438-25	Spring—Interlock Neutral Safety Switch (not used in 97-16-99-2X)	1
		Plunger—Interlock Neutral Safety Switch (not used in 97-16-99-2X)	1
		<b>For All Shift Forks, Brackets and Rod Groups</b>	
R-15	545063	Screw—7/16"-20 x 3/4" Socket Head	6
R-16	97-12-5	Interlock—Shift Rod	3
R-17	194-SP	Pin—Interlock (only (2) req'd. in 97-16-99-2X)	3
R-18	85-438-1	Poppet—Shift Rod	4
R-19	97-72-11	Spring—Shift Rod Poppet	4
		<b>First and Reverse Shift Rod Group</b>	
R-20	97-66-53	Shift Fork	1
R-21	97-67-303-1X*	Shift Rod	1
R-22	97-354-11	Shift Rod Bracket	1
R-23	97-438-24	Plunger—1st and Reverse Shift Bracket	1
R-24	97-72-2	Spring—1st and Reverse Shift Bracket Plunger	1
R-25	97-381-3	Snap Ring—1st and Reverse Shift Bracket Plunger	1
		<b>Second and Third Shift Rod Group</b>	
R-26	97-66-110	Shift Fork	1
R-27	97-67-304-1X*	Shift Rod	1
R-28	97-354-27	Shift Rod Bracket	1
R-29	545072	Screw—1/4"-28 x 1 3/8" Socket Head	1
		<b>Fourth and Fifth Shift Rod Group</b>	
R-30	97-66-61	Shift Fork	1
R-31	97-67-305-1X*	Shift Rod	1
		<b>Sixth and Seventh Shift Rod Group</b>	
R-32	97-66-120	Shift Fork	1
R-33	97-67-306-1X*	Shift Rod	1
R-34	97-354-32-1X	Shift Rod Bracket Assembly	1
R-35	97-354-32	Shift Rod Bracket	1
R-36	50-80-1	Ball—Shift Bracket Poppet	1
R-37	97-438-27	Plunger—Shift Bracket	1
R-38	97-381-47	Snap Ring	1
R-39	97-72-32	Spring—Shift Bracket Plunger Pin	1
R-40	97-72-33	Spring—Shift Bracket Pilot Pin	1
		<b>Parts Listed Below are not included in Assembly</b>	
N.S.	545056-5	Anaerobic Sealant	A/R
K-1	330564-1	Lift Hook	4
K-2	545002-4	Bolt—3/8"-16 x 1 1/2" Hex Head Self-locking	10
K-3	330360-15	Stud—5/8"-11 & 5/8"-18 x 3 1/2"	2
or	330360-18	Stud—5/8"-16 & 5/8"-18 x 4"	2
K-4	500365-43	Washer—5/8" Flat	2
K-5	500371-7	Nut—5/8"-18	2

\*Includes (1) each of 85-438-1 and 97-72-11

PARTS LISTED IN THIS CATALOG MAY NO LONGER BE AVAILABLE, USE WITH TRANSMISSION SUPERSEDING LIST.

**MODEL PST25-7**  
**REMOTE CONTROL ASSEMBLY**  
**HIGH ROD TYPE**

HDPS-0720-0699





# MODEL PST25-7

## REMOTE CONTROL ASSEMBLY

HDPS-0720-0699

Ref. No.	Part Number	Part Description	80-49X	97-18-4-2X	97-18-6-2X	73-16-3-1X	312-752-2X	85-16-42-2X	311-890-1X	97-18-3-2X
	<b>See Tab Bills</b>	<b>Cover &amp; Joint Assembly—Remote Control</b> .....	1	1	1	1	1	1	1	1
	311866X	Cover Assembly .....	1							
	312755X	Cover Assembly .....					1			
	311914X	Cover Assembly .....				1			1	
	97-18-16-1X	Cover Assembly .....			1					
	85-16-42-1X	Cover Assembly (Rotated 180 Degrees and Welded)						1		
	97-18-3-1X	Cover Assembly .....								1
	97-18-4-1X	Cover Assembly .....		1						
L-1	N.S.S.	Remote Control Cover .....	1	1	1	1	1	1	1	1
N.S.	82-24-3	Bushing—Remote Control Cover .....	4	4	4	4	4	4	4	4
L-2	8093X	Shift Finger Rod and Bracket Assembly .....	1							
	311888X	Shift Finger Rod and Bracket Assembly .....				1			1	
	312754X	Shift Finger Rod and Bracket Assembly .....					1			
	97-65-39-1X	Shift Finger Rod and Bracket Assembly .....		1						
	97-65-41-1X	Shift Finger Rod and Bracket Assembly .....			1					
	85-65-11-1X	Shift Finger Rod and Bracket Assembly .....						1		
	97-65-32-1X	Shift Finger Rod and Bracket Assembly .....								1
L-3	N.S.S.	Rod—Shift Finger .....	1	1	1	1	1	1	1	1
L-4	N.S.S.	Bracket—Shift Finger .....	1	1	1	1	1	1	1	1
L-5	85-24-4	Bushing—Shift Bracket .....	1	1	1	1	1	1	1	1
L-6	5000007-19	Woodruff Key #11 .....	1	1	1	1	1	1	1	1
L-7	82-6-9	Finger—Inner Shift .....	1	1	1	1	1	1	1	1
L-8	545063	Bolt—7/16"-20 x 13/16" Hex Head Self-locking ...	2	2	2	2	2	2	2	2
L-9	82-65-5	Rod—Remote Control .....	1	1	1	1		1	1	1
	82-65-22	Rod—Remote Control .....					1			
L-10	82-6-7	Finger—Outer Shift .....	1	1	1	1	1	1	1	1
L-11	28P-19	Seal—Remote Control Shift Rod .....	2	2	2	2	2	2	2	2
L-12	10380-SF	U-Joint Assembly—Control Rod .....	1				1	1	1	1
	904388	U-Joint Assembly—Control Rod .....		1	1	1				
L-13	82-118-1	Gasket—Aperture Cover .....	1	1	1	1	1	1	1	1
L-14	82-96-1	Aperture Cover .....	1	1	1	1	1	1	1	1
L-15	545005-1	Bolt—5/16"-18 x 5/8" Hex Head Self-locking .....	4	4	4	4	4	4	4	4
L-16	500166-16	Expansion Plug—1 1/16" .....	1	1	1	1	1	1	1	1
N.S.	311903X	Boot Kit—Remote Control .....	1	1		1	1		1	
N.S.	82-483-1	Boot—Standard .....	1	1		1	1		1	
N.S.	82-483-2	Boot—Cup Type .....	1	1		1	1		1	
N.S.	LW-3-9	Lockwire #18-M Gage (9"long) .....	3	3		3	3		3	
N.S.	313259	Valve—Road Speed Governor Control .....		1	1					
		<b>Parts Listed Below Are Not Included in Assembly</b>								
K-7	97-155-12	Gasket—Remote Control Cover .....	1	1	1	1	1	1	1	1
K-9	545126	Screw self-tapping (used for attaching Remote Control Assy.) .....	4	4	4	4	4	4	4	4

PARTS LISTED IN THIS CATALOG MAY NO LONGER BE AVAILABLE. USE WITH TRANSMISSION SUPERSEDING LIST.

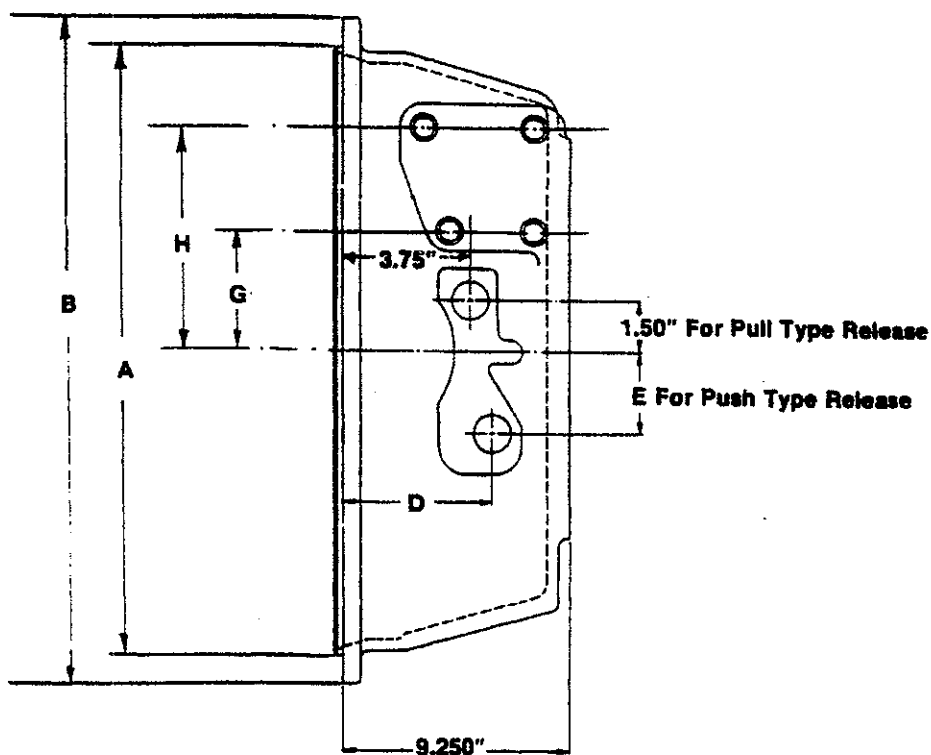
# MODEL PS125-7

HDPS-0720-0699

## CLUTCH HOUSING DIMENSIONS

Size No.	A Pilot Dia.	B O.D.
1	20 $\frac{1}{8}$ "	21 $\frac{3}{4}$ "
2	17 $\frac{5}{8}$ "	19 $\frac{1}{4}$ "

### NODAL MOUNT



Part No.	Casting No.	Material	SAE #	D Lower Hole Dim. Face To Center Hole	E Below Center	G Above Center	H Above Center
97-518-51-1X	C97-518-33	Iron	1	3.750"	1.500"	4.00"	8.50"
97-518-52-1X	C97-518-35	Iron	2	4.375"	2.375"	3.50"	6.50"
97-518-53-1X	C97-518-37	Aluminum	1	3.750"	1.500"	4.00"	8.50"
97-518-54-1X	C97-518-39	Aluminum	2	4.375"	2.375"	3.50"	6.50"
97-518-55-1X*	C97-518-37	Aluminum	1	3.750"	1.500"	4.00"	8.50"
97-518-56-1X	C97-518-35	Iron	2	3.750"	1.500"	3.75"	6.50"
97-518-57-1X	C97-518-33	Iron	1	3.750"	1.500"	4.00"	8.50"
97-518-66-1X	C97-518-33	Iron	1	3.750"	1.500"	4.00"	8.50"
97-518-70-1X	C97-518-39	Aluminum	2	4.375"	2.375"	3.50"	6.50"
97-518-71-1X	C97-518-37	Aluminum	1	3.750"	1.500"	4.00"	8.50"
97-518-72-1X	C97-518-37	Aluminum	1	3.750"	1.500"	4.00"	8.50"

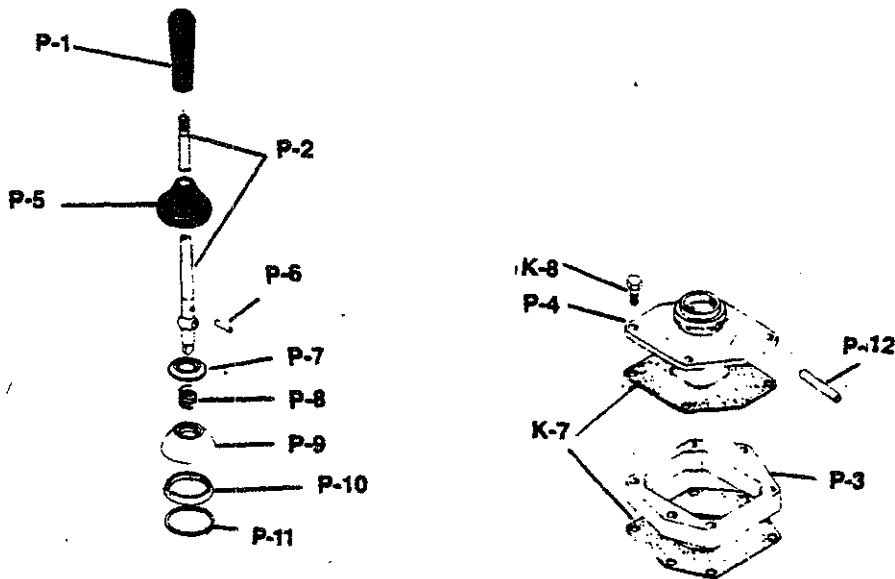
\* With Clutch Release Assembly mounting holes (Special for Ford)

PARTS LISTED IN THIS CATALOG MAY NO LONGER BE AVAILABLE, USE WITH TRANSMISSION SUPERSEDING LIST.

# MODEL PS125-7

## SHIFT LEVER AND DOME ASSEMBLY

HSPS-0720-0699



Ref. No.	Part Number	Part Description	85-16-37-2X	85-16-37-6X	85-16-37-17X	85-16-37-53X	85-16-37-59X	97-17-1-1X	312820-1X
	<b>See Tab Bills</b>	<b>Shift Lever and Dome Assembly</b> .....	1	1	1	1	1	1	1
P-1	39Q-27	Handle—Shift Lever .....	1						
	39Q-29	Handle—Shift Lever .....			1			1	1
P-2	25Q-1106	Shift Lever—Length 28 1/2" Straight .....							1
	25Q-1533	Shift Lever—Length 33" Straight .....	1	1					
	25Q-1570	Shift Lever—Length 33" Straight .....			1				
	25Q-2168	Shift Lever—Length 26.80" (2) Bends .....					1		
P-3	85-37-9	Spacer—Dome to Shifter Housing .....	1	1		1			
K-7	97-155-12	Gasket—Center (6 Holes) .....	2	2	2	2			
K-8	545028-6	Bolt—7/16"-14 x 2 1/4" Hex Head Self-locking .....	4	4		4			
	82-16-19X	Dome Assembly—Shift Lever (Center) (Includes P-4 thru P-12) .....							1
	85-16-37X	Dome Assembly—Shift Lever (Center) (Includes P-4 thru P-12) .....	1	1	1	1	1		
	97-17-1-1X	Dome Assembly—Shift Lever (Forward) (Includes P-4 thru P-12) .....						1	
P-4	82-16-19	Dome—Shift Lever—2 5/32" Height .....							1
	85-16-37	Dome—Shift Lever—3 5/32" Height .....	1	1	1	1	1		
	97-17-1	Dome—Shift Lever—4 5/8" Height .....						1	
P-5	55Q-5	Grommet—Shift Lever .....	1	1	1	1	1	1	1
P-6	286-SP	Pin—Shift Lever Compression Collar .....	1	1	1	1	1	1	1
P-7	55Q-7	Collar—Compression .....	1	1	1	1	1	1	1
P-8	56Q-25	Spring—Compression .....	1	1	1	1	1	1	1
P-9	54Q-13	Cup—Compression .....	1	1	1	1	1	1	1
P-10	69Q-6	Washer—Friction .....	1	1	1	1	1	1	1
P-11	62-381-7	Snap Ring—Rocker Shaft .....	1	1	1	1	1	1	1
P-12	53Q-15	Rocker Shaft—Shift Lever .....	1	1	1	1	1	1	1
		<b>Parts Listed Below Are Not Included in Assembly</b>							
K-7	97-155-12	Gasket—Dome to Shifter Housing (6 Holes) .....						1	1
or	97-155-13	Gasket—Dome to Shifter Housing (4 Holes) .....						1	1
K-8	545028-6	Bolt—7/16"-14 x 2 1/4" Hex Head Self-locking .....			4		4	4	4
K-8	545126	Screw self-tapping (used for attaching Shift Lever and Dome Assy.) .....	4	4	4	4	4	4	4

PARTS LISTED IN THIS CATALOG MAY NO LONGER BE AVAILABLE. USE WITH TRANSMISSION SUPERSEDING LIST.

# MODEL PS125-7

HDPS-0720-0699

## CLUTCH RELEASE CODE TABLE

Rel.Code See Tab Bill	CR-7 Yoke ★	Shaft		CR-6 Pedal Adjusting Arm	Rel.Code See Tab Bill	CR-7 Yoke ★	Shaft		CR-6 Pedal Adjusting Arm
		CR-1 Short	CR-2 Long				CR-1 Short	CR-2 Long	
1	105C-64	106C-1142	106C-1047	310233X	58	105C-137	106C-1141	106C-1169	310233X
2	105C-64	106C-1185	106C-438	—	59	105C-137	106C-1185	106C-438	—
3	105C-64	106C-1185	106C-939	310233X	60	105C-137	106C-1185	106C-617	310233X
4	105C-64	106C-1185	106C-1046	310233X	61	105C-137	106C-1185	106C-839	310233X
5	105C-64	106C-1185	106C-1047	310233X	62	105C-137	106C-1185	106C-939	310233X
6	105C-64	106C-1185	106C-1047	47-526-1-1X	63	105C-137	106C-1185	106C-939	310473X
7	105C-64	106C-1544	106C-839	310233X	64	105C-137	106C-1185	106C-953	310473X
8	105C-68	106C-1142	106C-438	—	65	105C-137	106C-1185	106C-1046	310233X
9	105C-68	106C-1142	106C-617	—	66	105C-137	106C-1185	106C-1046	310473X
10	105C-68	106C-1142	106C-617	310233X	67	105C-137	106C-1185	106C-1047	310233X
11	105C-68	106C-1142	106C-839	310233X	68	105C-137	106C-1185	106C-1083	310233X
12	105C-68	106C-1142	106C-839	310233X	69	105C-137	106C-1185	106C-1094	—
13	105C-68	106C-1142	106C-1046	310233X	70	105C-137	106C-1185	106C-1094	310233X
14	105C-68	106C-1142	106C-1047	310233X	71	105C-137	106C-1185	106C-1123	—
15	105C-68	106C-1278	106C-438	—	72	105C-137	106C-1185	106C-1123	310233X
16	105C-117	106C-1071	106C-839	310233X	73	105C-137	106C-1185	106C-1367	—
17	105C-117	106C-1071	106C-1094	310233X	74	105C-137	106C-1185	106C-1367	310233X
18	105C-117	106C-1142	106C-839	310233X	75	105C-137	106C-1185	106C-1375	310873X
19	105C-117	106C-1185	106C-438	—	76	105C-137	106C-1185	106C-1515	—
20	105C-117	106C-1185	106C-617	310233X	77	105C-137	106C-1185	106C-1529	—
21	105C-117	106C-1185	106C-839	47-526-1-1X	78	105C-137	106C-1185	330610-5	—
22	105C-117	106C-1185	106C-939	310233X	79	105C-137	106C-1216	106C-617	310233X
23	105C-117	106C-1185	106C-953	310873X	80	105C-137	106C-1278	106C-438	—
24	105C-117	106C-1185	106C-960	310233X	81	105C-137	106C-1278	106C-588	—
25	105C-117	106C-1185	106C-1046	310233X	82	105C-137	106C-1278	106C-588	310233X
26	105C-117	106C-1185	106C-1047	310233X	83	105C-137	106C-1278	106C-617	310233X
27	105C-117	106C-1185	106C-1083	—	84	105C-137	106C-1278	106C-939	310233X
28	105C-117	106C-1185	106C-1083	310233X	85	105C-137	106C-1278	106C-939	310873X
29	105C-117	106C-1185	106C-1083	310473X	86	105C-137	106C-1278	106C-960	310233X
30	105C-117	106C-1185	106C-1094	310233X	87	105C-137	106C-1278	106C-1046	—
31	105C-117	106C-1185	106C-1094	310873X	88	105C-137	106C-1278	106C-1046	310233X
32	105C-117	106C-1185	106C-1169	310233X	89	105C-137	106C-1278	106C-1047	—
33	105C-117	106C-1185	106C-1315	—	90	105C-137	106C-1278	106C-1047	310233X
34	105C-117	106C-1185	106C-1315	310233X	91	105C-137	106C-1278	106C-1083	310233X
35	105C-117	106C-1185	106C-1315	47-526-1-1X	92	105C-137	106C-1278	106C-1094	310233X
36	105C-117	106C-1185	106C-1417	310233X	93	105C-137	106C-1278	106C-1375	310233X
37	105C-117	106C-1185	106C-1417	310873X	94	105C-137	106C-1278	106C-1422	310233X
38	105C-117	106C-1185	106C-1490	310233X	95	105C-137	106C-1278	106C-1529	—
39	105C-117	106C-1278	106C-939	310233X	96	105C-137	106C-1360	106C-1083	—
40	105C-117	106C-1278	106C-960	310873X	97	105C-137	106C-1360	106C-1422	310233X
41	105C-117	106C-1278	106C-1047	310233X	98	105C-137	106C-1375	106C-438	310233X
42	105C-117	106C-1278	106C-1094	310233X	99	105C-137	106C-1498	106C-438	—
43	105C-117	106C-1278	106C-1315	310233X	100	105C-137	106C-1498	106C-617	310233X
44	105C-117	106C-1278	106C-1367	310233X	101	105C-137	106C-1498	106C-617	310473X
45	105C-117	106C-1360	106C-1083	310233X	102	105C-137	106C-1498	106C-939	310233X
46	105C-117	106C-1360	106C-1315	310233X	103	105C-137	106C-1498	106C-939	310473X
47	105C-117	Thru Shaft	106C-1550	—	104	105C-137	106C-1498	106C-953	310233X
48	105C-117	Thru Shaft	106C-1558	—	105	105C-137	106C-1498	106C-959	310233X
49	105C-124	106C-1185	106C-438	—	106	105C-137	106C-1498	106C-1046	310233X
50	105C-124	Thru Shaft	106C-1566	310233X	107	105C-137	106C-1498	106C-1047	—
51	105C-124	Thru Shaft	106C-1566	310473X	108	105C-137	106C-1498	106C-1047	310233X
52	105C-124	Thru Shaft	106C-1566	310873X	109	105C-137	106C-1498	106C-1083	310233X
52A	105C-124	Thru Shaft	49-510-1	310233X	110	105C-137	106C-1498	106C-1094	—
53	105C-132	106C-1185	106C-1047	310233X	111	105C-137	106C-1498	330610-11	310233X
54	105C-132	106C-1185	106C-1083	310233X	112	105C-137	330601-1	106C-939	310233X
55	105C-132	106C-1185	106C-1417	310873X	113	85-509-3	106C-1360	106C-1417	310233X
56	105C-132	106C-1185	48-510-9	—	114	85-509-3	Thru Shaft	106C-1578	310233X
57	105C-132	106C-1278	48-510-9	—	115	85-509-3	Thru Shaft	106C-1578	310873X
					116	312916	Thru Shaft	97-510-2	—

■ Use Clutch Release Bearing 7743X

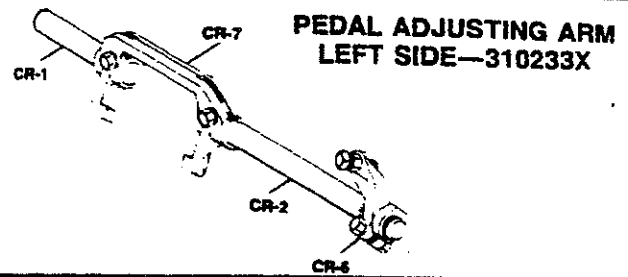
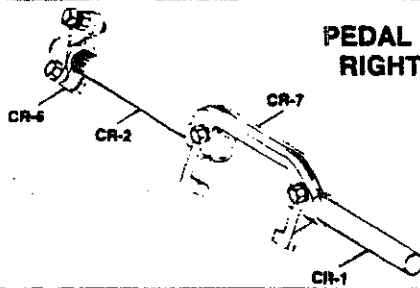
★ CLUTCH RELEASE YOKE ATTACHING PARTS—Use one KEY 10-30, two SCREWS 330231 and two LOCK WASHERS 500356-12

PARTS LISTED IN THIS CATALOG MAY NO LONGER BE AVAILABLE, USE WITH TRANSMISSION SUPERSEDING LIST.

# MODEL PST25-7

## CLUTCH RELEASE CODE TABLE

HDPS-0720-0699



CR-1 SHORT SHAFT	
Part No.	Length
106C-1071	4.062"
106C-1141	5.125"
106C-1142	6.125"
106C-1185	5.750"
106C-1216	4.750"
106C-1278	4.812"
106C-1360	5.312"
106C-1375	6.781"
106C-1498	6.500"
106C-1544	7.000"
330601-1	6.250"

CR-2 LONG SHAFT (Cont'd)		
Part No.	Type	Length
106C-1083	RS-8	7.969"
106C-1094	RS-8	8.469"
106C-1123	RS-8	12.968"
106C-1169	RS-8	9.125"
106C-1315	RS-8	7.625"
106C-1367	RS-8	10.312"
106C-1375	RS-8	6.781"
106C-1417	RS-8	7.250"
106C-1422	RS-8	7.500"
106C-1490	RS-8	16.000"
106C-1515	RS-5	11.375"
106C-1529	RS-5	8.312"
330610-5	RS-8	9.469"
330610-11	RS-8	10.750"
46-510-9	RS-5	7.125"

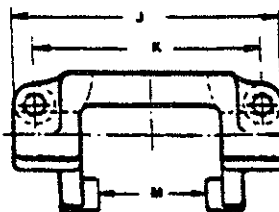


CR-2 LONG SHAFT		
Part No.	Type	Length
106C-438	RS-5	14.000"
106C-588	RS-5	7.000"
106C-617	RS-8	10.469"
106C-839	RS-8	11.469"
106C-939	RS-8	10.000"
106C-953	RS-8	9.750"
106C-959	RS-8	11.968"
106C-960	RS-8	8.719"
106C-1046	RS-8	8.968"
106C-1047	RS-8	9.469"

CR-6 PEDAL ADJ. ARM	
310233X	For Left Side Mtg.
310473X	For Right Side Mtg.
47-526-1-1X	Lever Type 7/4"
310873X	Lever Type 7/4"

■Lever type can be used on either right or left side.

THRU SHAFT (used with Push Type Clutch)		
Part No.	Type	Length
106C-1566	Splined	19.125"
106C-1550	Keyed	16.375"
106C-1558	Keyed	19.000"
106C-1578	Splined	19.500"
49-510-1	Keyed	19.120"
97-510-2	Splined	19.313"



CLUTCH RELEASE YOKES						
CR-7	Forging No.	Used With	Type	J	K	M
105C-64	F105C64	Spicer 15 1/2" SP	Pull	8.000"	6.500"	4.895"
105C-68	F105C99	Spicer 14" SP	Pull	7.125"	5.750"	4.132"
105C-117 <sup>1</sup>	F105C118	Spicer & Others	Push	8.375"	7.000"	4.885"
105C-124	F105C125	Spicer AL & AR	Push	3.750"	2.125"	2.885"
105C-132 <sup>2</sup>	F105C118	Spicer & Others	Push	8.375"	7.000"	4.885"
105C-137	F105C138	Spicer 13" and	Pull	8.000"	6.500"	4.895"
	C105C138	14" 2P				
85-509-3 <sup>3</sup>	F105C118	Spicer & Others	Push	8.375"	7.000"	4.885"

<sup>1</sup>Machined washer surface on yoke front  
<sup>2</sup>Machined washer surface on yoke rear (for clearance)  
<sup>3</sup>Same as <sup>1</sup> above except contains spring holes in lugs  
 ■Use 7743X Clutch Release Bearing

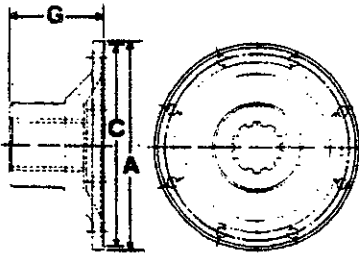
\* CLUTCH RELEASE YOKE ATTACHING PARTS—  
 Use one KEY 10-30, two SCREWS 330231 and two LOCK WASHERS 500356-12  
 NOTE: When changing from a two plate to single plate clutch or vice versa, a different bearing cap will be required.

PARTS LISTED IN THIS CATALOG MAY NO LONGER BE AVAILABLE, USE WITH TRANSMISSION SUPERSEDING LIST.

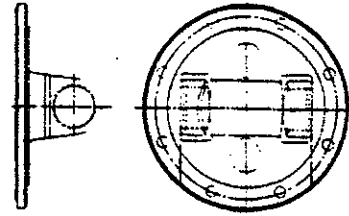
# MODEL PST25-7

## COMPANION FLANGES AND END YOKES

HDPS-0720-0699



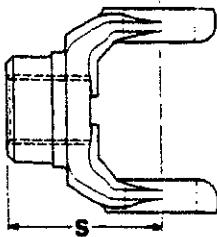
COMPANION FLANGE



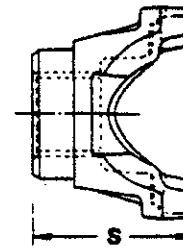
FLANGE YOKE

### Companion Flanges and Flange Yokes

A Joint Series	Flange Diameter	Companion Flange Assembly	Companion Flange	G to Flange Face Length	C Pilot Diameter F-Female M-Male	Mates With	
						Flange Yoke	Series
1710	8.00"	—	6-1-5821	6.31"	M-6.436"	—	1710



FULL ROUND



U-BOLT—BRG. STRAP—HALF ROUND

Series	Yoke Style	End Yoke Part Number	S End of Hub To Center Line Length	Momentary Joint Angle	Brake Size	Spline Type
1610	Half Round	5-4-7951-1	5 1/2"	18 1/2°	—	Fine
1710	Full Round	6-4-7691	5 3/16"	20°	—	Fine
1710	Half Round	6-4-7691-1	5 3/16"	20°	—	Fine
1760	Full Round	6.3-4-1251	5 9/16"	30°	—	Fine
1760	Half Round	6.3-4-1251-1	5 9/16"	30°	—	Fine
1810	Full Round	6.5-4-3821	5 9/16"	30°	—	Fine
1810	Half Round	6.5-4-3821-1	5 9/16"	30°	—	Fine



# MODEL PS125-7

HDPS-0720-0699

## SERVICE PARTS OVERHAUL KITS

Part Number	Part Description	313400-80X	313400-79X	313400-78X
	<b>Major Overhaul Kits</b> .....	1	1	1
	<b>Found Only in Major Overhaul Kits</b>			
97-35-102	Input Shaft—2.000"-10 Spline #306 Pilot .....	1	—	—
97-35-106	Input Shaft—1.750"-10 Spline #205 Pilot .....	—	1	—
97-35-105	Input Shaft—1.750"-10 Spline #306 Pilot .....	—	—	1
500010-8	Woodruff Key #29 .....	12	12	12
545065	Nut—Mainshaft (1 3/4"-16 S.A.E. Thread) .....	1	1	1
<b>313432-35X</b>	<b>Minor Overhaul Kit (Included in Major Overhaul Kits)</b> .....	1	1	1
550031	Bearing—Countershaft Front .....	2	2	2
550992	Bearing—Drive Gear/Input Shaft Front .....	1	1	1
550959	Bearing—Countershaft Rear .....	2	2	2
550953	Bearing—Drive Gear/Input Shaft Pocket Roller .....	1	1	1
550925	Bearing—Mainshaft Rear (Auxiliary Output) .....	1	1	1
550886	Bearing—Reverse Idler Gear Roller Assembly .....	4	4	4
97-463-36-1X	Oil Seal—Drive Gear Bearing Cap .....	1	1	1
	(Includes 2815 Installation Bulletin and Installation Sleeve)			
98-463-1	Oil Seal—Mainshaft Rear Bearing Cap .....	1	1	1
545077	Packet—#2 Moly Grease .....	1	1	1
545080-1	Adhesive—Mainshaft Nut Anaerobic Sealant .....	1	1	1
<b>312475-33X</b>	<b>Gasket Kit (Included in Major and Minor Overhaul Kit)</b> .....	1	1	1
545056-9	Anaerobic Sealant—24cc Tube .....	1	1	1
97-155-12	Gasket—Control Housing (Center Control) .....	1	1	1
97-155-13	Gasket—Control Housing (Forward Control) .....	1	1	1
97-223-1	Gasket—Drive Gear Bearing Cap .....	1	1	1
97-223-2	Gasket—Mainshaft Rear Bearing Cap .....	1	1	1
82-118-1	Gasket—Remote Control Aperture Cover .....	1	1	1
2754	Bulletin—Liquid Gasket .....	1	1	1
2770	Bulletin—Pocket Bearing Lubrication Instructions .....	1	1	1
2783	Bulletin—Mainshaft Nuts .....	1	1	1



# MODEL PS125-7

## SERVICE PARTS OVERHAUL KITS

HDPS-0720-0699

Part Number	Part Description	313400-80X	313400-79X	313400-78X
313429-24X	<b>Shifter Housing Repair—Small Parts</b> . . . . . (Included in Major Overhaul Kit)	1	1	1
97-12-5	Interlock . . . . .	3	3	3
194-SP	Pin—Interlock . . . . .	2	2	2
330739-1	Pin—Reverse Switch . . . . .	1	1	1
97-438-24	Plunger—1st & Reverse Shift Bracket . . . . .	1	1	1
85-438-1	Poppet—Shift Rod . . . . .	4	4	4
97-381-3	Snap Ring—Poppet 1st & Reverse Shift Bracket Plunger . . . . .	1	1	1
545125-1	Screw—Shift Rod Retainers . . . . .	7	7	7
97-72-11	Spring—Shift Rod Poppet . . . . .	4	4	4
97-72-2	Spring—1st & Reverse Shift Bracket Plunger . . . . .	1	1	1
50-80-4	Ball—Neutral Safety Switch . . . . .	1	1	1
97-72-31	Spring—Interlock (used with Neutral Safety Switch) . . . . .	1	1	1
313401-31X	<b>Thrust Washer Kit—(Included in Major Overhaul Kit)</b> . . . . .	1	1	1
330810	Mainshaft Thrust Washer External (24T) Large . . . . .	4	4	4
330814	Mainshaft Thrust Washer External (20T) Small . . . . .	2	2	2
330959	Mainshaft Thrust Washer Internal (48T) Large . . . . .	5	5	5
330960	Mainshaft Thrust Washer Internal (36T) Small . . . . .	2	2	2
330961	Mainshaft Thrust Washer Internal (22T) . . . . .	1	1	1
330806	Mainshaft Thrust Washer Internal (17T) . . . . .	1	1	1
313024-27X	<b>Snap Ring Kit—(Included in Major and Minor Overhaul Kit)</b> . . . . .	1	1	1
54-381-1	Snap Ring—Countershaft Rear Bearing Retaining . . . . .	2	2	2
97-381-30	Snap Ring—Countershaft Front Bearing Retaining . . . . .	2	2	2
97-381-44	Snap Ring—Drive Gear . . . . .	1	1	1
97-381-42	Snap Ring—Input Shaft Front Bearing Retaining . . . . .	1	1	1
97-381-41	Snap Ring—Input Shaft Bearing Cap Retaining . . . . .	1	1	1
97-381-1	Snap Ring—Mainshaft Internal (Small) . . . . .	2	2	2
97-381-2	Snap Ring—Mainshaft Internal (Large) . . . . .	3	3	3
98-381-1	Snap Ring—Mainshaft External (Large) . . . . .	5	5	5
97-381-32	Snap Ring—Mainshaft Internal (Reverse Gear) . . . . .	2	2	2
97-381-45	Snap Ring—Mainshaft External (Small) . . . . .	2	2	2
97-381-43	Snap Ring—Mainshaft 4th & 5th Internal Stop . . . . .	2	2	2
97-381-46	Snap Ring—Mainshaft External . . . . .	1	1	1
97-381-2	Snap Ring—Mainshaft Internal . . . . .	1	1	1

# MODEL PS125-7

HDPS-0720-0699

## TABULATED BILLS OF MATERIAL

Tab No.	Used By	For Use With Clutch	CLUTCH HOUSING			Drive Gear Input Shaft A-1	Drive Gear Bearing Cap Assembly F-2	Main Case Assembly G-1
			S A E	Assembly No. E-2	Rel. Code Pages 18			
<b>Model PS140-7A</b>								
<b>301444</b>								
-1	Service	Pull Type	2	97-518-52-1X	—	97-35-102-1X	97-19-52-1X	97-15-56-1X
-2	Volvo GM	Pull Type	1	97-518-51-1X	—	97-35-102-1X	97-19-52-1X	97-15-56-1X
-3	Kenworth	Pull Type	1	97-518-51-1X	100	97-35-102-1X	97-19-52-1X	97-15-56-1X
-4	Volvo GM	Pull Type	2	97-518-52-1X	—	97-35-102-1X	97-19-52-1X	97-15-56-1X
-5	Navistar	Pull Type	2	97-518-52-1X	—	97-35-102-1X	97-19-52-1X	97-15-56-1X
-6	Volvo GM	Pull Type	1	97-518-51-1X	—	97-35-102-1X	97-19-52-1X	97-15-56-1X
-7	Freightliner	Pull Type	1	97-518-53-1X	—	97-35-102-1X	97-19-52-1X	97-15-56-1X
-8★	Peterbilt	Pull Type	1	97-518-51-1X	—	97-35-102-1X	97-19-52-1X	97-15-56-1X
-9	Volvo GM	Pull Type	1	97-518-51-1X	—	97-35-102-1X	97-19-52-1X	97-15-56-1X
-10	Service	Pull Type	1	97-518-51-1X	—	97-35-102-1X	97-19-52-1X	97-15-56-1X
-11	Navistar	Pull Type	1	97-518-51-1X	—	97-35-102-1X	97-19-52-1X	97-15-56-1X
-12	Mack	Pull Type	1	97-518-51-1X	—	97-35-102-1X	97-19-52-1X	97-15-56-1X
-13★	Crane	Pull Type	1	97-518-51-1X	102	97-35-102-1X	97-19-52-1X	97-15-56-1X
-14	Volvo GM	Pull Type	1	97-518-51-1X	—	97-35-102-1X	97-19-52-1X	97-15-56-1X
-15	Navistar	Pull Type	2	97-518-51-1X	—	97-35-106-1X	97-19-52-1X	97-15-56-1X
-16■	Volvo GM	Pull Type	1	97-518-51-1X	—	97-35-102-1X	97-19-52-1X	97-15-56-1X
-17	Volvo GM	Pull Type	1	97-518-51-1X	—	97-35-102-1X	97-19-52-1X	97-15-56-1X
-18	Ford	Pull Type	1	97-518-55-1X	—	97-35-102-1X	97-19-52-1X	97-15-56-1X
-19	Ford	Pull Type	1	97-518-55-1X	—	97-35-102-1X	97-19-52-1X	97-15-56-1X
-20	Ford	Pull Type	2	97-518-54-1X	—	97-35-102-1X	97-19-52-1X	97-15-56-1X
-21■	Volvo GM	Pull Type	1	97-518-51-1X	—	97-35-102-1X	97-19-52-1X	97-15-56-1X
-22	Volvo GM	Pull Type	1	97-518-51-1X	—	97-35-102-1X	97-19-52-1X	97-15-56-1X
-23	Volvo GM	Pull Type	1	97-518-51-1X	—	97-35-102-1X	97-19-52-1X	97-15-56-1X
-24	Freightliner	Pull Type	1	97-518-53-1X	—	97-35-102-1X	97-19-52-1X	97-15-56-1X
-25	Ford	Pull Type	1	97-518-55-1X	—	97-35-102-1X	97-19-52-1X	97-15-56-1X
-26	Volvo GM	Pull Type	1	97-518-51-1X	—	97-35-102-1X	97-19-52-1X	97-15-56-1X
-27	Freightliner	Pull Type	1	97-518-53-1X	—	97-35-102-1X	97-19-52-1X	97-15-56-1X
-28★	Prevost	Pull Type	1	97-518-51-1X	59	97-35-102-1X	97-19-52-1X	97-15-56-1X
-29■	Australia	Pull Type	1	97-518-53-1X	—	97-35-102-1X	97-19-52-1X	97-15-56-1X
-30	Ford	Pull Type	2	97-518-54-1X	—	97-35-105-1X	97-19-52-1X	97-15-56-1X
-31	Ford	Pull Type	2	97-518-54-1X	—	97-35-105-1X	97-19-52-1X	97-15-56-1X
-32	Navistar	Pull Type	1	97-518-51-1X	—	97-35-102-1X	97-19-52-1X	97-15-56-1X
-33	Ford	Pull Type	2	97-518-54-1X	—	97-35-105-1X	97-19-52-1X	97-15-56-1X
-34◀	Kenworth	Pull Type	1	97-518-51-1X	100	97-35-102-1X	97-19-52-1X	97-15-56-1X
-35	Ford	Pull Type	2	97-518-52-1X	—	97-35-105-1X	97-19-52-1X	97-15-56-1X
-36	Ford	Pull Type	2	97-518-54-1X	—	97-35-105-1X	97-19-52-1X	97-15-56-1X
-37	Ford	Pull Type	2	97-518-54-1X	—	97-35-105-1X	97-19-52-1X	97-15-56-1X
-38▶	Volvo GM	Pull Type	1	97-518-51-1X	—	97-35-102-1X	97-19-52-1X	97-15-56-1X
-39	Ford	Pull Type	2	97-518-54-1X	—	97-35-105-1X	97-19-52-1X	97-15-56-1X
-40	Navistar	Pull Type	1	97-518-51-1X	—	97-35-102-1X	97-19-52-1X	97-15-56-1X
-41	Kenworth	Pull Type	1	97-518-51-1X	100	97-35-102-1X	97-19-52-1X	97-15-56-1X
-42	Ford	Pull Type	2	97-518-54-1X	—	97-35-102-1X	97-19-52-1X	97-15-56-1X
-43	Volvo GM	Pull Type	1	97-518-51-1X	—	97-35-102-1X	97-19-52-1X	97-15-56-1X
-44	Never released for Production							
-45	Ford	Pull Type	1	97-518-55-1X	—	97-35-102-1X	97-19-52-1X	97-15-56-1X

★ With Clutch Brake Assembly 125237

■ With 97-454-2-1X has (1) each 97-454-2 Speedometer Sleeve and 97-463-34 Oil Seal

◀ With Countershaft Provision on Both Sides

▶ Includes 313291 Neutral Safety Switch Assembly shipped loose

PARTS LISTED IN THIS CATALOG MAY NO LONGER BE AVAILABLE, USE WITH TRANSMISSION SUPERSEDING LIST.

# MODEL PS125-7

## TABULATED BILLS OF MATERIAL

HDPS-0720-0699

Tab No.	Mainshaft Rear Bearing Cap Assembly H-2 (incl. Bushing, Seal)	SPEEDOMETER		End Yoke or Companion Flange 20	SHIFTER			
		Drive Gear or Signal Gear B-30	Driven Gear H-7		Housing Ass'y Pages 10-13	Lever & Dome Ass'y Page 17	Remote Control Pages 15	
<b>Model PS140-7A</b>								
<b>301444</b>								
-1	97-19-53-1X	—	—	—	97-16-99-3X	—	—	
-2	97-19-53-1X	—	—	—	97-16-99-3X	—	—	
-3	97-19-53-1X	97-452-19	—	6-4-7691	97-16-99-3X	—	—	
-4	97-19-53-1X	97-452-18	—	—	97-16-100-3X	—	—	
-5	97-19-53-1X	—	—	—	97-16-100-3X	—	—	
-6	97-19-53-1X	—	—	—	97-16-100-3X	—	—	
-7	97-19-53-1X	97-452-19	—	6-4-7691	97-16-99-3X	—	—	
-8	97-19-53-1X	—	—	—	97-16-99-3X	—	—	
-9	97-19-53-1X	—	—	—	97-16-99-3X	—	—	
-10	97-19-53-1X	—	—	—	97-16-99-3X	—	—	
-11	97-19-53-1X	—	—	—	97-16-100-3X	—	—	
-12	97-19-53-1X	97-452-20	—	—	97-16-99-3X	—	—	
-13	97-19-53-1X	97-452-18	97-453-15	6-4-7691	97-16-99-3X	—	—	
-14	97-19-53-1X	97-452-19	—	6.3-4-1251	97-16-99-3X	—	—	
-15	97-19-53-1X	—	—	—	97-16-100-3X	—	—	
-16	97-19-53-1X	97-452-18	97-453-15	6-4-7691	97-16-99-3X	—	—	
-17	97-19-53-1X	97-452-19	—	6.3-4-1251	97-16-99-3X	—	97-18-4-2X	
-18	97-19-53-1X	97-452-19	—	6-4-7691-1	97-16-100-3X	—	—	
-19	97-19-53-1X	97-452-19	—	6-4-7691-1	97-16-99-3X	—	—	
-20	97-19-53-1X	97-452-19	—	6.3-4-1251-1	97-16-100-3X	—	—	
-21	97-19-53-1X	97-452-18	97-453-15	6-4-7691	97-16-100-3X	—	—	
-22	97-19-53-1X	97-452-19	—	6.3-4-1251	97-16-99-3X	—	—	
-23	97-19-53-1X	97-452-19	—	6.3-4-1251	97-16-99-3X	—	97-18-6-2X	
-24	97-19-53-1X	97-452-21	—	—	97-16-100-3X	—	—	
-25	97-19-53-1X	97-452-21	—	6-4-7691-1	97-16-100-3X	—	—	
-26	97-19-53-1X	—	—	—	97-16-100-3X	—	—	
-27	97-19-53-1X	97-452-21	—	—	97-16-100-3X	—	—	
-28	97-19-53-1X	97-452-18	97-453-15	6.5-4-3821	97-16-99-3X	—	97-18-3-2X	
-29	97-19-53-1X	97-452-18	97-453-15	—	97-16-99-3X	—	—	
-30	97-19-53-1X	97-452-19	—	—	97-16-100-3X	—	—	
-31	97-19-53-1X	97-452-19	—	6-4-7691-1	97-16-100-3X	—	—	
-32	97-19-53-1X	—	—	—	97-16-100-3X	—	—	
-33	97-19-53-1X	97-452-19	—	6.5-4-3821	97-16-100-3X	—	—	
-34	97-19-53-1X	97-452-19	—	6-4-7691-1	97-16-99-3X	—	—	
-35	97-19-53-1X	97-452-19	—	6.5-4-3821	97-16-100-3X	—	—	
-36	97-19-53-1X	97-452-19	—	6-4-7691-1	97-16-99-3X	—	—	
-37	97-19-53-1X	97-452-19	—	—	97-16-99-3X	—	—	
-38	97-19-53-1X	—	—	—	97-16-100-3X	—	—	
-39	97-19-53-1X	97-452-19	—	6.3-4-1251	97-16-100-3X	—	—	
-40	97-19-53-1X	—	—	—	97-16-100-3X	—	—	
-41	97-19-53-1X	97-452-18	—	6-4-7691	97-16-99-3X	—	—	
-42	97-19-53-1X	97-452-19	—	6.5-4-3821-1	97-16-100-3X	—	—	
-43	97-19-53-1X	97-452-21	—	—	97-16-99-3X	—	—	
-44	Never released for Production							—
-45	97-19-53-1X	97-452-19	—	6.3-4-1251-1	97-16-100-3X	—	—	

PARTS LISTED IN THIS CATALOG MAY NO LONGER BE AVAILABLE, USE WITH TRANSMISSION SUPERSEEDING LIST.

# MODEL PS125-7

HDPS-0720-0699

## TABULATED BILLS OF MATERIAL

Tab No.	Used By	For Use With Clutch	CLUTCH HOUSING			Drive Gear Input Shaft A-1	Drive Gear Bearing Cap Assembly F-2	Main Case Assembly G-1
			S A E	Assembly No. E-2	Rel. Code Pages 18			
<b>Model PS140-7A</b>								
<b>301444 (Cont'd)</b>								
-46	Ford	Pull Type	1	97-518-55-1X	—	97-35-102-1X	97-19-52-1X	97-15-56-1X
-47	Ford	Pull Type	1	97-518-55-1X	—	97-35-102-1X	97-19-52-1X	97-15-56-1X
-48	Ford	Pull Type	1	97-518-55-1X	—	97-35-102-1X	97-19-52-1X	97-15-56-1X
-49	Navistar	Pull Type	2	97-518-52-1X	—	97-35-106-1X	97-19-52-1X	97-15-56-1X
-50	Navistar	Pull Type	2	97-518-52-1X	—	97-35-106-1X	97-19-52-1X	97-15-56-1X
-51	Navistar	Pull Type	1	97-518-51-1X	—	97-35-102-1X	97-19-52-1X	97-15-56-1X
-52	Navistar	Pull Type	2	97-518-52-1X	—	97-35-106-1X	97-19-52-1X	97-15-56-1X
-53	Navistar	Pull Type	1	97-518-51-1X	—	97-35-102-1X	97-19-52-1X	97-15-56-1X
-54§	Service	Pull Type	1	97-518-51-1X	—	97-35-102-1X	97-19-52-1X	97-15-56-1X
-55▶	Volvo GM	Pull Type	1	97-518-53-1X	—	97-35-102-1X	97-19-52-1X	97-15-56-1X
-56★	Paccar	Pull Type	1	97-518-51-1X	—	97-35-102-1X	97-19-52-1X	97-15-56-1X
-57	Ford	Pull Type	2	97-518-54-1X	—	97-35-105-1X	97-19-52-1X	97-15-56-1X
-58	Ford	Pull Type	2	97-518-54-1X	—	97-35-102-1X	97-19-52-1X	97-15-56-1X
-59▶	Volvo GM	Pull Type	1	97-518-51-1X	—	97-35-102-1X	97-19-52-1X	97-15-56-1X
-60	Kenworth	Pull Type	1	97-518-51-1X	100	97-35-102-1X	97-19-52-1X	97-15-56-1X
-61	Volvo GM	Pull Type	1	97-518-51-1X	—	97-35-102-1X	97-19-52-1X	97-15-56-1X
<b>Model PS125-7B</b>								
<b>301445</b>								
-1	Volvo GM	Pull Type	1	97-518-66-1X	—	97-35-102-1X	97-19-52-1X	97-15-56-1X
-2	Volvo GM	Pull Type	1	97-518-66-1X	—	97-35-102-1X	97-19-52-1X	97-15-56-1X
-3	Navistar	Pull Type	1	97-518-66-1X	—	97-35-102-1X	97-19-52-1X	97-15-56-1X
-4	Freightliner	Pull Type	1	97-518-66-1X	—	97-35-102-1X	97-19-52-1X	97-15-56-1X
-5	Kenworth	Pull Type	1	97-518-66-1X	100	97-35-102-1X	97-19-52-1X	97-15-56-1X
-6★	Peterbilt	Pull Type	1	97-518-66-1X	—	97-35-102-1X	97-19-52-1X	97-15-56-1X
-7	Navistar	Pull Type	1	97-518-66-1X	—	97-35-102-1X	97-19-52-1X	97-15-56-1X
-8	Ford	Pull Type	2	97-518-70-1X	—	97-35-105-1X	97-19-52-1X	97-15-56-1X
-9	Navistar	Pull Type	2	97-518-70-1X	—	97-35-106-1X	97-19-52-1X	97-15-56-1X
-10	Volvo GM	Pull Type	1	97-518-66-1X	—	97-35-102-1X	97-19-52-1X	97-15-56-1X
-11▶	Volvo GM	Pull Type	1	97-518-66-1X	—	97-35-102-1X	97-19-52-1X	97-15-56-1X
-12	Ford	Pull Type	2	97-518-70-1X	—	97-35-102-1X	97-19-52-1X	97-15-56-1X
-13	Freightliner	Pull Type	1	97-518-71-1X	—	97-35-102-1X	97-19-52-1X	97-15-56-1X
-14	Ford	Pull Type	1	97-518-72-1X	—	97-35-102-1X	97-19-52-1X	97-15-56-1X
-15	Ford	Pull Type	2	97-518-70-1X	—	97-35-105-1X	97-19-52-1X	97-15-56-1X
-16	Volvo GM	Pull Type	2	97-518-70-1X	—	97-35-102-1X	97-19-52-1X	97-15-56-1X
-17	Ford	Pull Type	2	97-518-70-1X	—	97-35-102-1X	97-19-52-1X	97-15-56-1X
-18	Ford	Pull Type	2	97-518-70-1X	—	97-35-105-1X	97-19-52-1X	97-15-56-1X
-19	Ford	Pull Type	2	97-518-70-1X	—	97-35-105-1X	97-19-52-1X	97-15-56-1X
-20	Volvo GM	Pull Type	1	97-518-66-1X	—	97-35-102-1X	97-19-52-1X	97-15-56-1X
-21§	Service	Pull Type	1	97-518-66-1X	—	97-35-102-1X	97-19-52-1X	96-15-56-1X
-22▶	Volvo GM	Pull Type	1	97-518-71-1X	—	97-35-102-1X	97-19-52-1X	97-15-56-1X
-23▶	Volvo GM	Pull Type	1	97-518-66-1X	—	97-35-102-1X	97-19-52-1X	97-15-56-1X
-24	Freightliner	Pull Type	1	97-518-71-1X	—	97-35-102-1X	97-19-52-1X	97-15-56-1X
-25★	Paccar	Pull Type	1	97-518-66-1X	—	97-35-102-1X	97-19-52-1X	97-15-56-1X
-26	Ford	Pull Type	2	97-518-70-1X	—	97-35-102-1X	97-19-52-1X	97-15-56-1X
-27	Ford	Pull Type	2	97-518-70-1X	—	97-35-105-1X	97-19-52-1X	97-15-56-1X
-28	Ford	Pull Type	2	97-518-70-1X	—	97-35-105-1X	97-19-52-1X	97-15-56-1X
-29	Navistar	Pull Type	2	97-518-70-1X	—	97-35-102-1X	97-19-52-1X	97-15-56-1X

§ Short Box

▶ Includes 313291 Neutral Safety Switch Assembly shipped loose

★ With Clutch Brake Assembly 125237

PARTS LISTED IN THIS CATALOG MAY NO LONGER BE AVAILABLE, USE WITH TRANSMISSION SUPERSEDING LIST.

# MODEL PS125-7

## TABULATED BILLS OF MATERIAL

HDPS-0720-0699

Tab No.	Mainshaft Rear Bearing Cap Assembly H-2 (incl. Bushing, Seal)	SPEEDOMETER		End Yoke or Companion Flange 20	SHIFTER		
		Drive Gear or Signal Gear B-30	Driven Gear H-7		Housing Ass'y Pages 10-13	Lever & Dome Ass'y Page 17	Remote Control Pages 15
<b>Model PS140-7A</b>							
<b>301444 (Cont'd)</b>							
-46	97-19-53-1X	97-452-19	--	6.5-4-3821-1	97-16-100-3X	--	--
-47	97-19-53-1X	97-452-19	--	6.3-4-1251-1	97-16-99-3X	--	--
-48	97-19-53-1X	97-452-19	--	6.5-4-3821-1	97-16-99-3X	--	--
-49	97-19-53-1X	--	--	--	97-16-100-3X	--	--
-50	97-19-53-1X	--	--	--	97-16-99-3X	--	--
-51	97-19-53-1X	--	--	--	97-16-100-3X	--	--
-52	97-19-53-1X	--	--	--	97-16-99-3X	--	--
-53	97-19-53-1X	--	--	--	97-16-99-3X	--	--
-54	97-19-53-1X	--	--	--	--	--	--
-55	97-19-53-1X	97-452-19	--	--	97-16-100-3X	--	--
-56	97-19-53-1X	--	--	--	97-16-99-3X	--	--
-57	97-19-53-1X	97-452-19	--	6.5-4-3821-1	97-19-99-3X	--	--
-58	97-19-53-1X	97-452-19	--	6.5-4-3821-1	97-16-99-3X	--	--
-59	97-19-53-1X	97-452-19	--	--	97-16-99-3X	--	--
-60	97-19-53-1X	97-452-19	--	6-4-7691-1	97-16-99-3X	--	--
-61	97-19-53-1X	97-452-19	--	6-4-7691-1	97-16-99-3X	--	--
<b>Model PS125-7B</b>							
<b>301445</b>							
-1	97-19-53-1X	--	--	--	97-16-99-3X	--	--
-2	97-19-53-1X	--	--	--	97-16-100-3X	--	--
-3	97-19-53-1X	--	--	--	97-16-99-3X	--	--
-4	97-19-53-1X	97-452-19	--	--	97-16-99-3X	--	--
-5	97-19-53-1X	97-452-19	--	6-4-7691	97-16-99-3X	--	--
-6	97-19-53-1X	--	--	--	97-16-99-3X	--	--
-7	97-19-53-1X	--	--	--	97-16-100-3X	--	--
-8	97-19-53-1X	--	--	--	97-16-100-3X	--	--
-9	97-19-53-1X	--	--	--	97-16-100-3X	--	--
-10	97-19-53-1X	--	--	--	97-16-99-3X	--	--
-11	97-19-53-1X	97-452-19	--	--	97-16-100-3X	--	--
-12	97-19-53-1X	--	--	--	97-16-100-3X	--	--
-13	97-19-53-1X	97-452-19	--	--	97-16-100-3X	--	--
-14	97-19-53-1X	--	--	--	97-16-100-3X	--	--
-15	97-19-53-1X	97-452-19	--	6-4-7691-1	97-16-100-3X	--	--
-16	97-19-53-1X	--	--	--	97-16-99-3X	--	--
-17	97-19-53-1X	--	--	--	97-16-99-3X	--	--
-18	97-19-53-1X	97-452-19	--	6-4-7691-1	97-16-99-3X	--	--
-19	97-19-53-1X	97-452-19	--	6.3-4-1251	97-16-100-3X	--	--
-20	97-19-53-1X	97-452-21	--	--	97-16-99-3X	--	--
-21	97-19-53-1X	--	--	--	--	--	--
-22	97-19-53-1X	97-452-19	--	--	97-16-100-3X	--	--
-23	97-19-53-1X	97-452-19	--	--	97-16-99-3X	--	--
-24	97-19-53-1X	97-452-19	--	--	97-16-99-3X	--	--
-25	97-19-53-1X	--	--	--	97-16-99-3X	--	--
-26	97-19-53-1X	97-452-19	--	6-4-7691-1	97-16-99-3X	--	--
-27	97-19-53-1X	97-452-19	--	5-4-7951-1	97-16-99-3X	--	--
-28	97-19-53-1X	97-452-19	--	6.3-4-1251-1	97-16-99-3X	--	--
-29	97-19-53-1X	--	--	--	97-16-100-3X	--	--

PARTS LISTED IN THIS CATALOG MAY NO LONGER BE AVAILABLE, USE WITH TRANSMISSION SUPERSEDING LIST.



14700 Helm Court  
Plymouth, MI 48170  
(800) 401-9866 or (734) 456-3770  
Fax: (734) 456-3739  
[www.ttcautomotive.com](http://www.ttcautomotive.com)

