

**CM40 SERIES
TRANSMISSION
PARTS CATALOG**



Bulletin No. T210-CM40-1

March 2000



MODEL CM40

CONTENTS, RATIO TABLE and IDENTIFICATION

MDES-0521-0799

CONTENTS

RATIO TABLE	1
GEARS and RELATED PARTS	2-5
DRIVE GEAR GROUP	2-3
MAINSHAFT GROUP	2-3
COUNTERSHAFT GROUP	4-5
REVERSE IDLER SHAFT GROUP	4-5
DRIVE GEAR TABLE	5
CLUTCH HOUSING & DRIVE GEAR BEARING CAP GROUP	6-7
CASE TABLE	8
CASE GROUP	8-9
REAR BEARING CAP CHART WITH BRAKE APPLICATIONS	10
REAR BEARING CAP GROUP and RELATED PARTS	10-11
REMOTE CONTROL ASSEMBLY	12
SHIFT LEVER and DOME ASSEMBLY	13
SHIFT BAR and FORK ASSEMBLY	14
END YOKES	15
CLUTCH RELEASE CODE TABLE	16-17
DRIVE GEAR BEARING CAP CHART WITH CLUTCH APPLICATION	18
CLUTCH HOUSING DIMENSIONS	18
OVERHAUL KITS—MAJOR and MINOR	20-21
TABULATED BILLS OF MATERIALS	22-27

RATIO TABLE

SPEEDS	MODELS	
	4054-A	4054-D
1st	7.22	7.22
2nd	3.88	3.88
3rd	2.21	2.21
4th	1.42	1.26
5th	1.00	1.00
Rev.	7.22	7.22

IDENTIFICATION

The Name Plate (NP-96) affixed to the RIGHT side of the Transmission is stamped with information:

SERIAL

B/M No. MODEL

Abbreviations used in this parts list include:

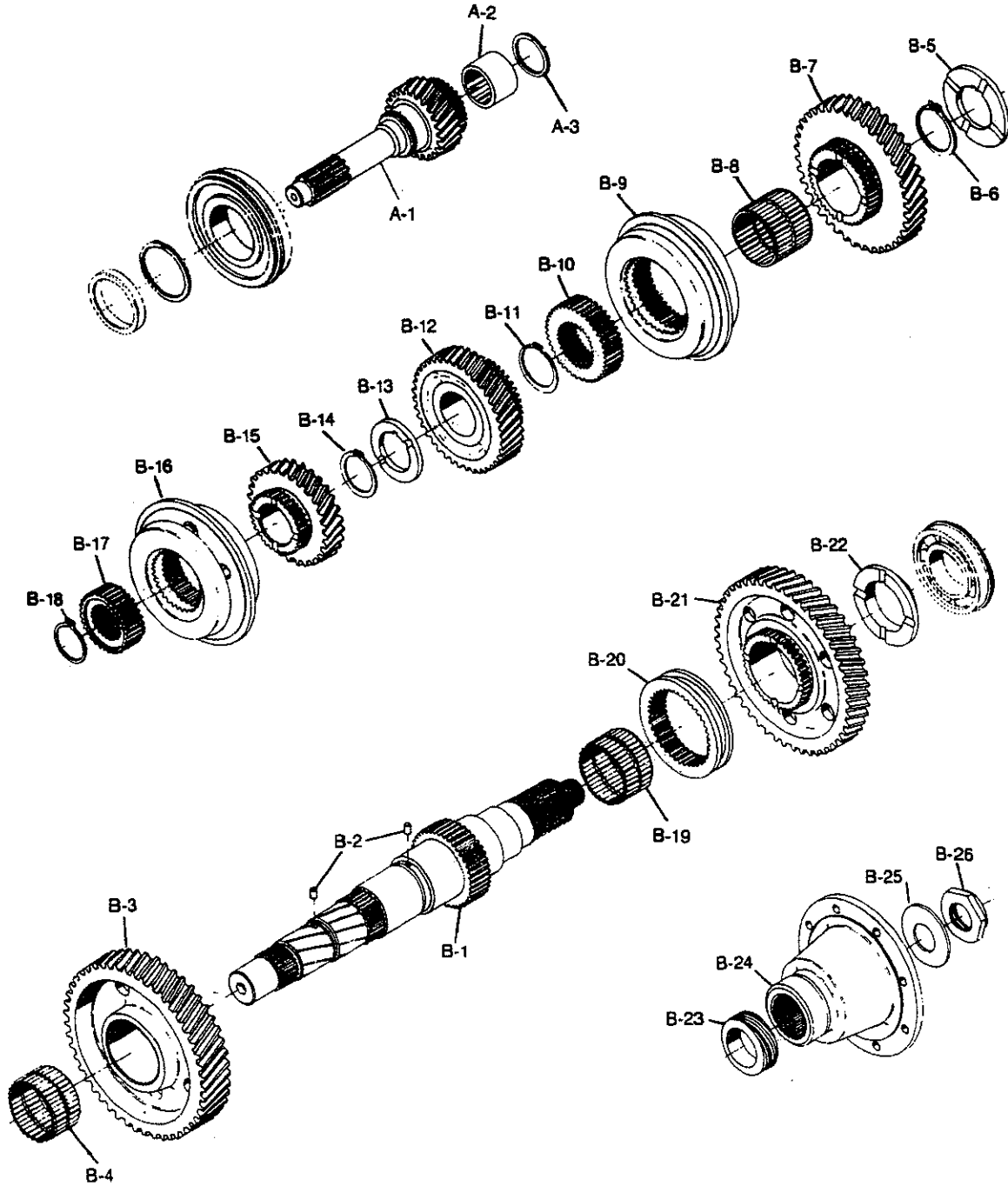
N.S. — Not Shown
N.S.S. — Not Sold Separately
N.R. — Not Required

In requesting more information on these transmissions, furnish the B/M No. and the Serial Number.

MODEL CM40

GEARS and RELATED PARTS

MDES-0521-0799



PARTS LISTED IN THIS CATALOG MAY NO LONGER BE AVAILABLE, USE WITH TRANSMISSION SUPERSEDING LIST.

MODEL CM40

GEARS and RELATED PARTS

MDES-0521-0799

Ref. No.	Part Number	Part Description	Qty.
DRIVE GEAR GROUP—INPUT			
A-1	See Tab Bills	Gear—main drive gear—input	1
A-2	500962	Pocket Bearing	1
A-3	40-381-6	Snap Ring—pocket bearing	1
		(A.S.S.N. J850930006)	
MAINSHAFT GROUP—OUTPUT			
B-1	40-362-1	Mainshaft	1
B-2	545087	Pin—thrust washer lock	2
B-3	40-8-7	Gear—1st speed (46T)	1
B-4	550963	Bearing—1st gear needle	1
B-5	40-47-2	Thrust Washer—1st & 2nd speed gear	1
B-6	40-381-4	Snap Ring—1st & 2nd thrust washer	1
B-7	40-8-5	Gear—2nd speed (38T)	1
B-8	550968	Bearing—2nd speed needle	1
B-9	313471X	Synchronizer—2nd & 3rd speed	1
B-10	40-466-2	Gear—2nd & 3rd speed clutch	1
B-11	40-381-3	Snap Ring—2nd & 3rd clutch gear	1
B-12	40-8-3	Gear—3rd speed (39T)	1
B-13	40-47-3	Thrust Washer—3rd & 4th speed gear	1
B-14	40-381-2	Snap Ring—3rd & 4th thrust washer	1
B-15		Gear—4th speed	1
	40-8-1	(28T) for 4054-A	
	40-8-11	(26T) for 4054-D	
B-16	313472X	Synchronizer—4th & 5th speed gear	1
		(B.S.S.N. J870707038)	
or	313558X	Synchronizer—4th & 5th speed gear	1
		(A.S.S.N. J870707038)	
B-17	40-466-1	Gear—4th & 5th speed clutch (33T)	1
		(B.S.S.N. J870707038)	
or	49-466-2	Gear—4th & 5th speed clutch (33T)	1
		(A.S.S.N. J870707038)	
B-18	40-381-1	Snap Ring—4th & 5th clutch gear	1
B-19	550963	Bearing—reverse gear needle	1
B-20	40-465-1	Clutch collar—1st & reverse	1
		(Used in B/M 301329 & 301343 B.S.S.N. J860919001)	
		(See Page 14)	
B-21	40-465-11	Clutch Collar—1st & reverse	1
		(Used in B/M 301420 & 301421 A.S.S.N. J860919001)	
		(See Page 14)	
B-22	40-8-9	Gear—reverse (46T)	1
B-22	313605X	Thrust Washer Bearing—reverse (see note)	1
		(Used in B/M 301329 & 301343 B.S.S.N. J860919001)	
B-23	49-47-3	Thrust Washer—reverse	1
		(Used in B/M 301420 & 301421 A.S.S.N. J860919001)	
	See Tab Bills	Gear—speedometer drive	1
or	53-37-1	Spacer—used in place of speedometer gear	1
B-24	See Tab Bills	Companion Flange or End Yoke	1
B-25	53-205-1	Washer—mainshaft nut	1
B-26	501200	Nut—mainshaft (1.250-18)	1

Synchronizer—4th & 5th speed gear

*B-16 Units built prior to starting serial no. J870707038 may be serviced with 4th-5th synchronizer assembly 313472X or 313558X
Units built after starting serial no. J870707038 and after must be serviced only with 4th-5th synchronizer assembly 313558X

B.S.S.N.—Before Starting Serial Number

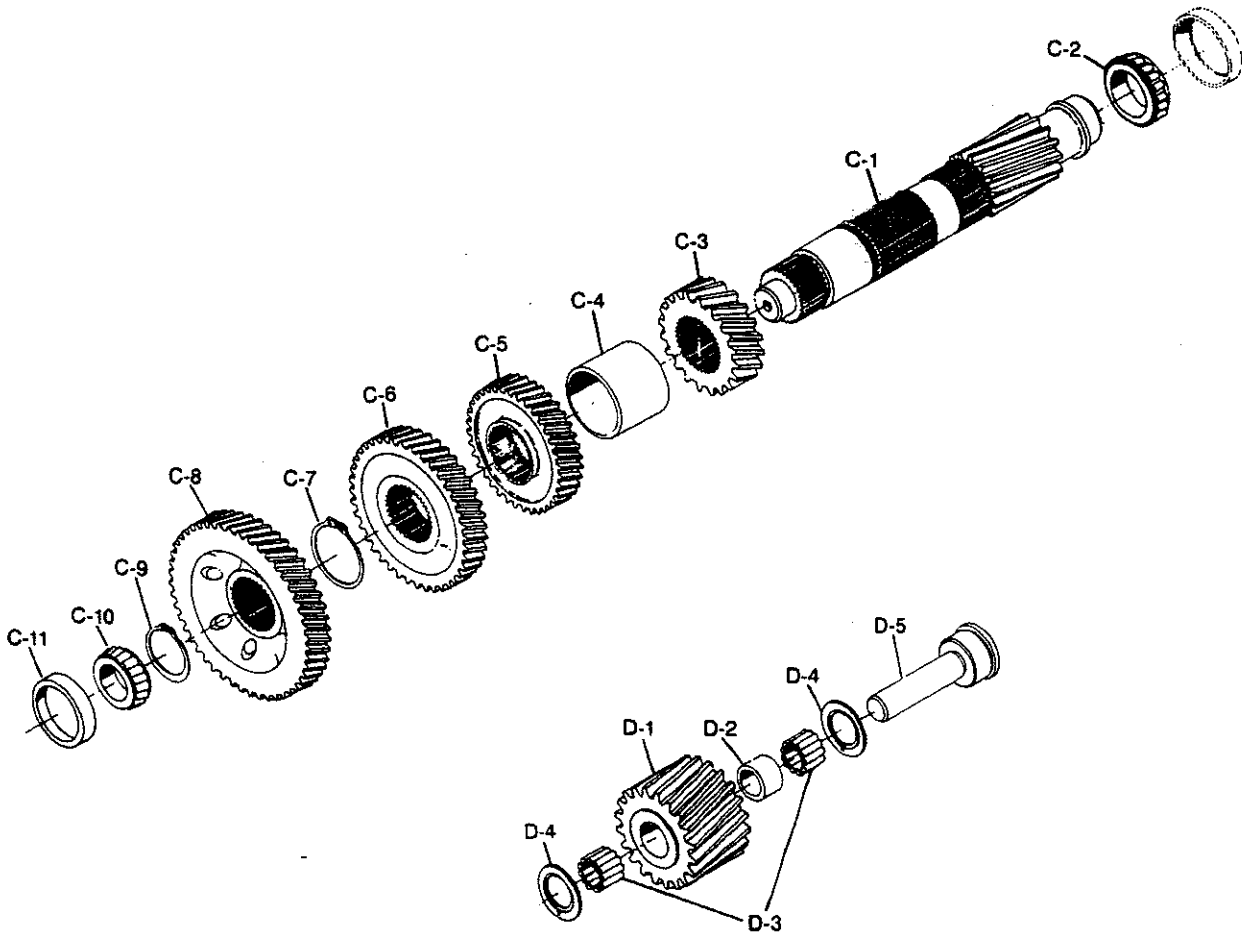
A.S.S.N.—After Starting Serial Number

PARTS LISTED IN THIS CATALOG MAY NO LONGER BE AVAILABLE, USE WITH TRANSMISSION SUPERSEDING LIST.

MODEL CM40

MDES-0521-0799

GEARS and RELATED PARTS

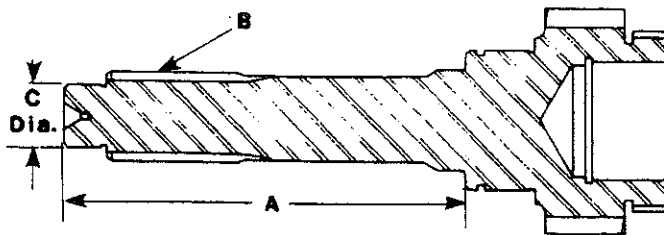


MODEL CM40

GEARS and RELATED PARTS

MDES-0521-0799

Ref. No.	Part Number	Part Description	Qty.
COUNTERSHAFT GROUP			
C-1	40-30-1	Countershaft	1
C-2	550966	Cone—bearing—countershaft rear	1
C-3	40-196-5	Gear—2nd speed (20T)	1
C-4	40-37-1	Spacer—2nd & 3rd speed gear	1
C-5	40-196-3	Gear—3rd speed (36T)	1
C-6		Gear—4th speed	1
	40-196-1	(40T) for 4054-A	
	40-196-7	(42T) for 4054-D	
C-7	40-381-5	Snap Ring—4th countershaft gear	1
C-8	40-1-1	Gear—drive (49T)	1
C-9	40-381-3	Snap Ring—2nd & 3rd mainshaft clutch gear	1
C-10	550964	Cone—bearing—countershaft front	1
C-11	550965	Cup—bearing—countershaft front	1
REVERSE IDLER SHAFT GROUP			
D-1	40-5-1	Gear—reverse idler (21T)	1
D-2	97-37-1	Spacer—bearing reverse idler gear	1
D-3	550886	Bearing—reverse idler	2
D-4	974-W	Thrust Washer—reverse idler	2
D-5	40-60-1	Shaft—idler gear	1



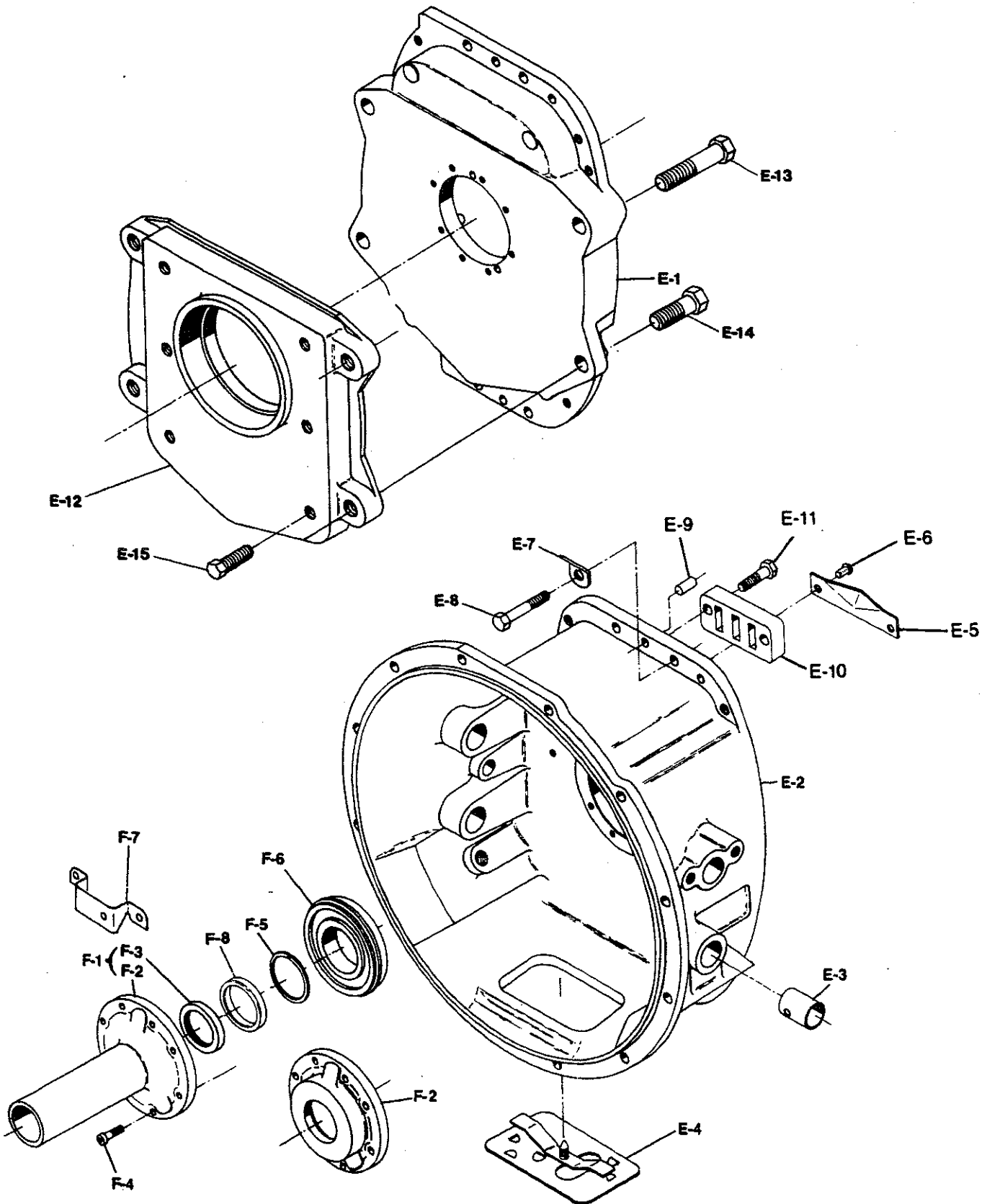
DRIVE GEAR TABLE

A Length	B Spline Dia. Teeth	C-Pilot Size	Drive Gear Part No.	Service No.
(Used in Units B.S.S.N. J850930006)				
6.439"	1 ³ / ₈ "-10	.9837"	40-35-1 (Void)	40-35-11-1X
9.929"	1 ¹ / ₂ "-10	.9837"	40-35-3 (Void)	40-35-12-1X
8.179"	1 ¹ / ₂ "-10	.9837"	40-35-4 (Void)	40-35-13-1X
7.239"	1 ¹ / ₂ "-10	.9837"	40-35-5 (Void)	40-35-14-1X
9.875"	1 ³ / ₄ "-10	1.1800"	40-35-6 (Void)	40-35-15-1X
(Used in Units A.S.S.N. J850930006)				
6.439"	1 ³ / ₈ "-10	.9837"	40-35-11	40-35-11-1X
9.929"	1 ¹ / ₂ "-10	.9837"	40-35-12	40-35-12-1X
8.179"	1 ¹ / ₂ "-10	.9837"	40-35-13	40-35-13-1X
7.239"	1 ¹ / ₂ "-10	.9837"	40-35-14	40-35-14-1X
9.875"	1 ³ / ₄ "-10	1.1800"	40-35-15	40-35-15-1X
9.875"	1 ³ / ₄ "-10	.9837"	40-35-16	40-35-16-1X

PARTS LISTED IN THIS CATALOG MAY NO LONGER BE AVAILABLE, USE WITH TRANSMISSION SUPERSEDING LIST.

MODEL CM40 CLUTCH HOUSING

MDES-0521-0799



MODEL CM40

CLUTCH HOUSING and DRIVE GEAR BEARING CAP GROUP

MDES-
0521-0799

Ref. No.	Part Number	Part Description	Qty.
CLUTCH HOUSING			
E-1	40-360-1-1X*	Retainer—case front (Ford—gas only)	1
	40-360-3-1X*	Retainer—case front (GMC—gas only)	1
		(Used in Units B.S.S.N. J870119058)	
	49-360-3-1X*	Retainer—case front (Ford—gas only)	1
	49-360-4-1X*	Retainer—case front (GMC—gas only)	1
		(Used in Units A.S.S.N. J870119058)	
E-2	See Tab Bills	Clutch Housing Assembly (See page 18)	1
E-3	128C-20	Bushing—clutch release shaft	2
E-4	46-96-2-1X	Hand Hole Cover Assembly	1
E-5	40-468-1	Oil Trough	1
E-6	545088	Pin—drive oil trough	2
E-7	330564-1	Lift Hook	1
E-8	545082-2	Bolt—clutch housing to case (MF10 x 1.25 x 30mm)	16
E-9	545086	Dowel Pin—case front	2
E-10	40-477-1	Support—front shift bar	1
E-11	545082-3	Bolt—shift bar support (MF10 x 1.25 x 35mm)	4
E-12‡	40-215-1	Adapter—clutch housing	1
E-13‡	545008-3	Bolt—adapter clutch housing (.625-11 x 1.750)	2
E-14‡	545008-6	Bolt—adapter clutch housing (.625-11 x 3.500)	2
E-15‡	545001	Bolt—clutch housing (.500-13 x 1.250)	6
DRIVE GEAR BEARING CAP GROUP			
F-1	See Tab Bills	Cap & Seal Assembly (See table page 12)	1
F-2	N.S.S.	Cap	1
F-3	40-463-6-1X	Seal—drive gear bearing cap (stem only)	1
or	40-463-4-1X	Seal—drive gear bearing cap (flat only)	1
F-4	545093	Cap Screw—drive gear bearing cap	8
F-5	46-381-1	Snap Ring—drive gear front bearing retainer	1
F-6	550989	Bearing Drive—front	1
F-7	40-411-1	Return Spring Bracket (Navistar Only)	1

*Case retainer assembly contains (1) 40-468-1 oil trough & (2) 545088 pin

‡Required with #3 clutch housing

N.S.S.—Not Sold Separately

B.S.S.N.—Before Starting Serial Number

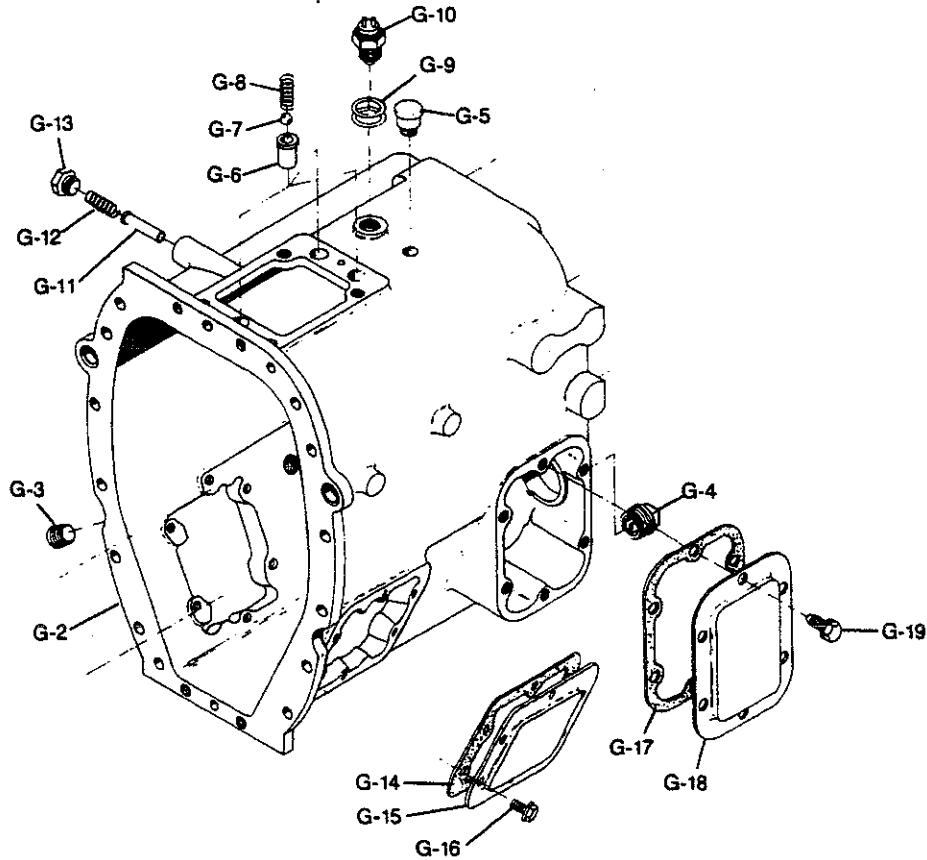
A.S.S.N.—After Starting Serial Number

PARTS LISTED IN THIS CATALOG MAY NO LONGER BE AVAILABLE, USE WITH TRANSMISSION SUPERSEDING LIST.

MODEL CM40

CASE GROUP

MDES-0521-0799



CASE TABLE

Case Assembly G-1	Case Casting No.	Plug— Side Hole N.S.	Service No.	Used By
(Used in Units B.S.S.N. J851115002)				
40-15-1-1X	C40-15-2	—	40-15-6-2X	Ford
40-15-4-1X	C40-15-2	—	40-15-8-2X	GMC
40-15-5-1X	C40-15-2	330800	40-15-9-2X	Navistar
(Used in Units A.S.S.N. J851115002)				
40-15-6-1X	C40-15-7	—	40-15-6-1X	Ford
40-15-8-1X	C40-15-7	—	40-15-8-1X	GMC
40-15-9-1X	C40-15-7	330800	40-15-9-1X	Navistar

B.S.S.N.—Before Starting Serial Number
A.S.S.N.—After Starting Serial Number

PARTS LISTED IN THIS CATALOG MAY NO LONGER BE AVAILABLE, USE WITH TRANSMISSION SUPERSEDING LIST.

MODEL CM40

CASE GROUP

MDES-0521-0799

Ref. No.	Part Number	Part Description	Qty.
CASE GROUP			
G-1	See Tab Bills	Case Assembly (See table page 8)	1
G-2	N.S.S.	Case	1
N.S.	NP-96	Nameplate	1
N.S.	252-SP	Pin—nameplate	4
N.S.	330934	Magnet Ceramic	1
G-3	500100	Plug—filler 3/4"-14 N.P.T.F.	1
G-4	62-39-3	Plug—magnetic drain 3/4"-14 N.P.T.F.	1
G-5	312268	Breather—assembly	1
G-6	40-487-1	Insert—poppet spring & ball	3
G-7	40-80-1	Ball—poppet	3
G-8	97-72-23	Spring—shift bar poppet	3
G-9		Shim—back-up lite	
		(Required only with switches 313504 & 313505)	
	40-228-2-1	(.016/.014)	1
	40-228-2-2	(.031/.029)	1
G-10	313504	Switch—back-up lite (Navistar only)	1
		(B.S.S.N. J841008051)	
	313505	Switch—back-up lite (Ford only)	1
		(B.S.S.N. J841005022)	
	313552	Switch—back-up lite (GMC only)	1
	313538	Switch—back-up lite (Navistar only)	1
		(A.S.S.N. J841008051)	
	313539	Switch—back-up lite (Ford only)	1
		(A.S.S.N. J841005022)	
G-11	40-438-1	Pin—1st & reverse select plunger	1
G-12	62-72-8	Spring—1st & reverse select finger plunger	1
G-13	40-59-1	Plug—1st & reverse plunger	1
or	40-59-2	Plug—reverse stop (used w/o reverse gear)	1
G-14	97-324-1-1X	Gasket—6 bolt P.T.O. aperture cover	2
G-15	50-267-2	Cover—6 bolt P.T.O. aperture	2
G-16	330800	Bolt—P.T.O. aperture (3/8"-16 x 3/4")	12
G-17	49-324-1-1X	Gasket—reverse idler cover	1
G-18	40-96-3	Cover—reverse idler	1
G-19	545085	Bolt—reverse idler cover (M10 x 1.5 x 20mm)	6

N.S.—Not Shown

N.S.S.—Not Sold Separately

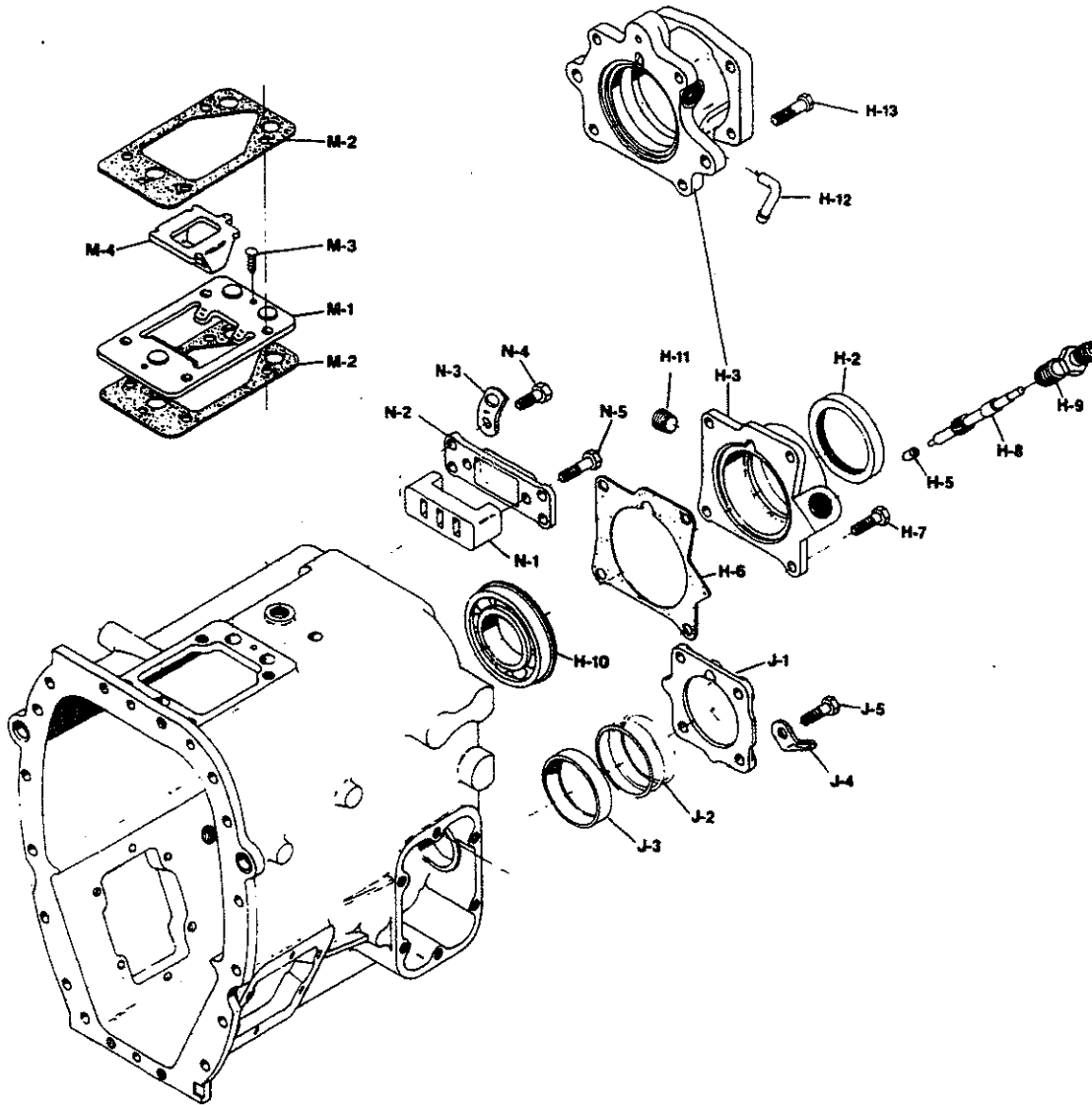
B.S.S.N.—Before Starting Serial Number

A.S.S.N.—After Starting Serial Number

PARTS LISTED IN THIS CATALOG MAY NO LONGER BE AVAILABLE, USE WITH TRANSMISSION SUPERSEDING LIST.

MODEL CM40

MDES-0521-0799 REAR BEARING CAP GROUP and RELATED PARTS



MAINSHAFT REAR BEARING CAP CHART

Cap No.	Assembly No.	Service No. Include 63-463-1 Oil Seal	Speedometer Bushing	Brake	Used By
40-19-7	40-19-7-1X	40-19-39-1X	Electronic	None	Ford
40-19-13	40-19-13-2X	40-19-38-2X	60-475-1	None	Navistar
40-19-19	40-19-19-2X	40-19-19-2X	60-475-1	D.C.M.	Navistar
40-19-22	40-19-22-2X	40-19-22-2X	60-475-1	D.C.M.	Navistar
40-19-33	40-19-33-1X	40-19-39-1X	Electronic	None	Ford
40-19-36	40-19-36-1X	40-19-39-1X	Electronic	None	Ford
40-19-38	40-19-38-2X	40-19-38-2X	60-475-1	None	General
40-19-39	40-19-39-1X	40-19-39-1X	Electronic	None	Ford

PARTS LISTED IN THIS CATALOG MAY NO LONGER BE AVAILABLE, USE WITH TRANSMISSION SUPERSEDING LIST.

MODEL CM40

REAR BEARING CAP GROUP and RELATED PARTS MDES-0521-0799

Ref. No.	Part Number	Part Description	Qty.
MAINSHAFT REAR BEARING CAP GROUP			
H-1	See Tab Bills	Cap Assembly—mainshaft bearing cap (See page 10)	1
H-2	63-463-1	Oil Seal—mainshaft rear bearing cap	1
H-3	N.S.S.	Cap—mainshaft rear bearing	1
H-5	See page 12	Bushing—speedometer	1
H-6	40-223-1	Gasket—mainshaft rear bearing cap	1
or	40-223-3	Gasket—mainshaft rear bearing cap (brake only) (Used on B/M 301329 & 301343)	1
H-7	545082-2	Bolt—rear bearing cap (MF10 x 1.25 x 30mm)	4
	545082-3	Bolt—rear bearing cap (MF10 x 1.378 x 35mm)	4
N.S.	37179	Tube—vent (assembly to front of transmission)	1
N.S.	545084-2	Bolt—cap (D.C.M. brake) (MF12 x 1.25 x 35mm)	2
or	545084-4	Plug—case (rear holes) (MF12 x 1.25 x 16mm)	2
N.S.	330800	Plug—side hole $\frac{3}{8}$ "-16 x $\frac{3}{4}$ "	2
H-8	See Tab Bills	Gear—speedometer drive	1
H-9	55-454-1	Sleeve— $\frac{1}{4}$ " speedometer driven gear	1
or	97-454-2-1X	Sleeve & Oil seal	1
	44-539-1	Cap—speedometer dust	1
N.S.	55-334-1	Plug—speedometer (use w/o driven gear)	1
	545106	Plug—speedometer outlet (Ford) (Electronic)	1
H-10	545021	Plug—electronic speedometer (Ford)	1
H-10	313605X	Bearing—rear mainshaft (Used in B/M 301359 & 301043 B.S.S.N. J880213001) (Used in B/M 301420 & 301421 A.S.S.N. J860919001)	1
	550989	Bearing—rear mainshaft	1
J-1	40-22-1	Cap—countershaft rear bearing (B.S.S.N. J851115002)	1
	40-22-3	Cap—countershaft rear bearing (A.S.S.N. J851115002)	1
J-2	40-228-1-1	Shim—countershaft rear bearing (.0055/.0045)	1
	40-228-1-2	(.1110/.0090)	1
	40-228-1-3	(.0165/.0135)	1
J-3	550967	Cup—countershaft rear bearing	1
J-4	330564-1	Lift Hook	1
J-5	545084-3	Bolt—countershaft rear bearing cap MF12 x 1.25 x 30mm (Used only on B/M with 40-22-1) (B.S.S.N. J851115002)	4
	545002-4	Bolt—countershaft rear bearing cap (.375-16 x 1.750) (Used only on B/M with 40-22-3) (A.S.S.N. J851115002)	4
INTERLOCK GROUP			
M-1	40-200-1	Plate—interlock retainer	1
M-2	40-155-1	Gasket—case to interlock plate	2
M-3	545091	Screw—drive (interlock retainer)	2
M-4	40-200-2	Plate—interlock	1
REAR SHAFT BAR SUPPORT GROUP			
N-1	40-477-2	Support—rear shift bar	1
N-2	40-96-1	Cap—rear shift bar	1
N-3	330564-1	Lift Hook	1
N-4	545082-1	Bolt—bar cap MF10 x 1.25 x 25mm	4
N-5	545082-3	Bolt—bar support MF10 x 1.25 x 35mm	4

N.S.—Not Shown

B.S.S.N.—Before Starting Serial Number

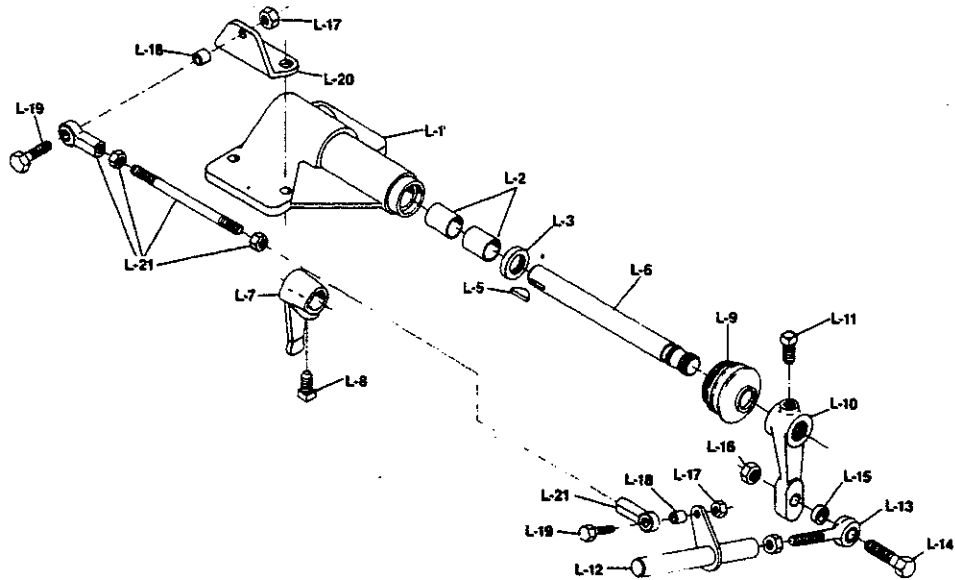
A.S.S.N.—After Starting Serial Number

PARTS LISTED IN THIS CATALOG MAY NO LONGER BE AVAILABLE, USE WITH TRANSMISSION SUPERSEDING LIST.

MODEL CM40

REMOTE CONTROL ASSEMBLY

MDES-0521-0799



Ref. No.	Part Number	Part Description	40-18-1-2X	40-18-1-3X	40-18-1-6X
	See Tab Bills	Remote control assembly	1	1	1
	40-18-1-1X	Remote control cover assembly	1	1	1
	N.S.S.	Remote control cover	2	2	2
L-1	40-24-1	Bushing—remote control cover	1	1	1
L-2	28P-19	Seal—remote control rod	1	1	1
L-3					
L-4	40-65-1-1X	Inner shifter shaft, finger and key	1	1	1
L-5	500007-19	Key—shift bracket	1	1	1
L-6	40-65-1	Shaft—remote control	1	1	1
L-7	40-6-1	Finger—shift	1	1	1
L-8	545063	Set screw— $\frac{7}{16}$ "-20 x .72" Allen head	1	1	1
L-9	97-483-3	Boot—shift rod	1	1	1
N.S	LW-3-9	Lockwire	2	2	2
L-10	40-6-3	Control lever	1	—	1
or	40-6-5	Control lever	—	1	—
L-11	500550-7	Set screw— $\frac{7}{16}$ "-14 x $\frac{7}{8}$ " square head	1	1	1
L-12	40-65-3-1X	Shift rod	1	1	—
L-13	330938	Rod end	1	1	—
L-14	545001-2	Bolt—control lever ($\frac{1}{2}$ "-13 x $2\frac{1}{4}$ " hex head) ..	1	1	—
L-15	40-38-2	Spacer—control lever bolt	1	1	—
L-16	500370-5	Nut—control lever and rod end ($\frac{1}{2}$ "-13 hex) ..	1	1	—
L-17	500370-3	Nut—tie rod assy. mounting bolt ($\frac{3}{8}$ "-16 hex) ..	2	2	—
L-18	40-38-3	Spacer—tie rod assembly mounting bolt	2	2	—
L-19	545002-7	Bolt—tie rod assy. ($\frac{3}{8}$ "-16 x $1\frac{1}{2}$ " hex head) ..	2	2	—
L-20	40-354-3	Bracket—tie rod	1	1	—
L-21	40-65-2-1X	Tie rod assembly	1	1	—

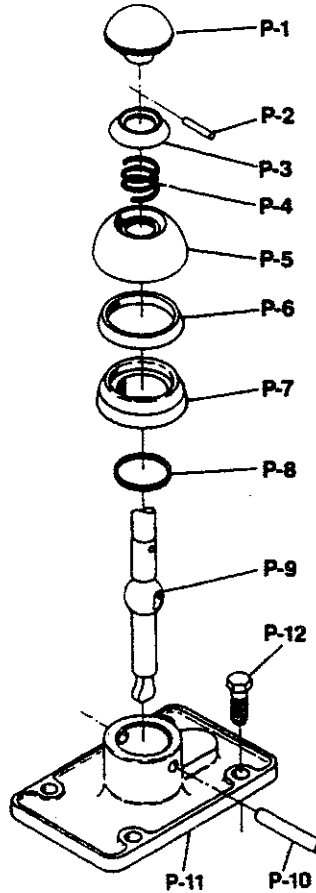
N.S.S.—Not Sold Separately

PARTS LISTED IN THIS CATALOG MAY NO LONGER BE AVAILABLE, USE WITH TRANSMISSION SUPERSEDING LIST.

MODEL CM40

SHIFT LEVER and DOME ASSEMBLY

MDES-0521-0799



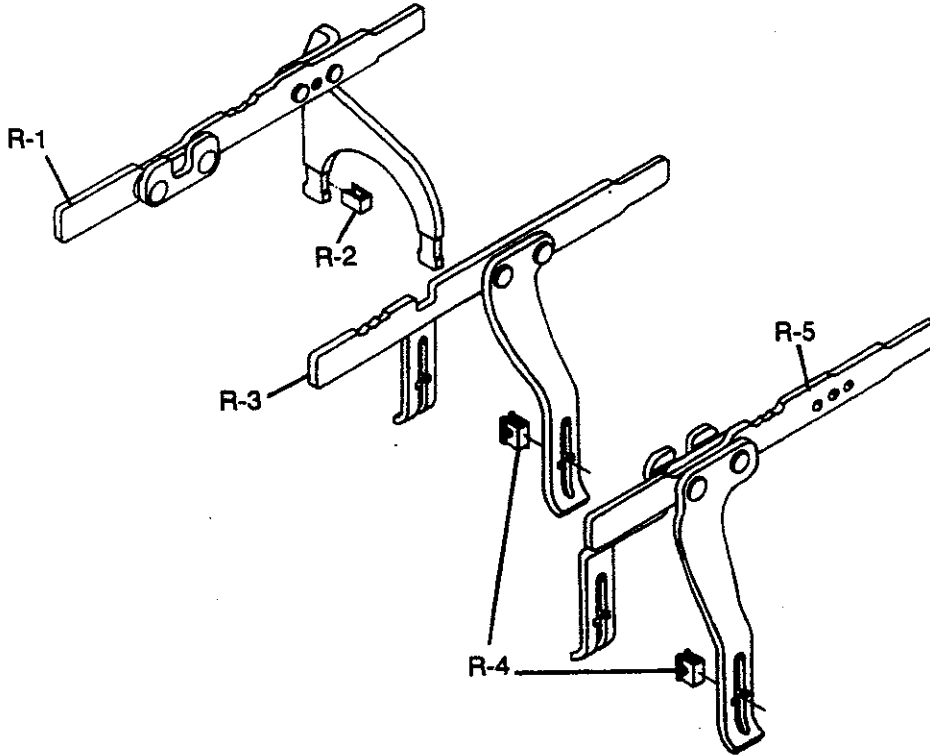
Ref. No.	Part Number	Part Description	40-17-1-12X	40-17-3-2X	40-17-3-5X
	See Tab Bills	Shift lever and dome assembly	1	1	1
P-1	39Q-27	Handle—shift lever	1	1	1
P-2	286-SP	Pin—shift lever collar	1	1	1
P-3	55Q-7	Collar—compression	1	1	1
P-4	56Q-25	Spring—compression	1	1	1
P-5	54Q-13	Cup—compression	1	1	1
P-6	69Q-6	Washer—compression	1	1	1
P-7	54Q-20	Insert—dome	1	1	1
P-8	30-463-9	"O" ring—dome seal	1	1	1
P-9	25Q-1701-20	Shift lever—straight	1	—	—
	25Q-1701-49	Shift lever—straight	—	1	—
	25Q-2461	Shift lever—lower end (RVI)	—	—	1
P-10	53Q-15	Shaft—rock	1	1	1
P-11	40-17-1	Dome—shift lever (overall height 2")	1	—	1
	40-17-3	Dome—shift lever (overall height 3.31") ..	1	1	—
P-12	545028	Bolt—shift tower (7/16" -14 x 1 1/4") (not included in assembly)	4	4	4

PARTS LISTED IN THIS CATALOG MAY NO LONGER BE AVAILABLE, USE WITH TRANSMISSION SUPERSEDING LIST.

MODEL CM40

MDES-0521-0799

SHIFT BAR and FORK ASSEMBLY



Ref. No.	Part Number	Part Description	Qty.	Service
		SHIFT BAR and FORK ASSEMBLY		
R-1	313473-1X	Shift Fork and Bar—1st & reverse (see note) (B.S.S.N. J841107112)	1	313615-1X
	313571-1X	Shift Fork and Bar—1st & reverse (see note) (A.S.S.N. J841107112) (B.S.S.N. J860919001) (#45 stamped on forward face of fork web)	1	313615-1X
	313615X	Shift Fork and Bar—1st & reverse (see note) (A.S.S.N. J860919001) (Part No. stamped on tab)	1	313615-3X
R-2	46-486-2	Clip—1st & reverse shift fork (Used with 313473X & 313571X)	2	46-486-2
	49-486-3	Clip—1st & reverse shift fork (Used with 313615X)	2	49-486-3
R-3	313474-1X	Shift Fork and Bar—2nd & 3rd	1	313474-1X
R-4	40-486-1	Clip—2nd, 3rd, 4th & 5th shift fork	4	40-486-1
R-5	313475-1X	Shift Fork and Bar—4th & 5th	1	313475-1X

NOTE: (R-1) 313473-1X or 313571-1X can be serviced with new clips (R-2) 46-486-2 if clutch collar and shiftbar are in undamaged condition.

If clutch collar or shiftbar are worn or damaged they must be replaced with sub-assembly listed under service no. which will include updated clutch collar and shiftbar.

B.S.S.N.—Before Starting Serial Number

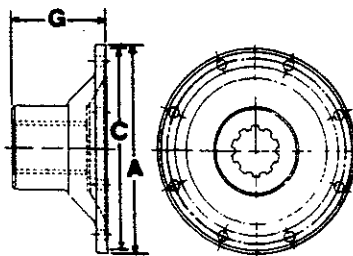
A.S.S.N.—After Starting Serial Number

PARTS LISTED IN THIS CATALOG MAY NO LONGER BE AVAILABLE, USE WITH TRANSMISSION SUPERSEDING LIST.

MODEL CM40

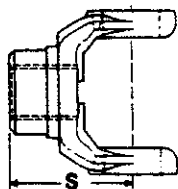
COMPANION FLANGES and END YOKES

MDES-0521-0799

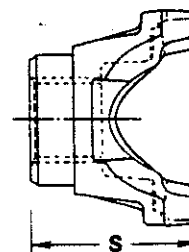


COMPANION FLANGE

Companion Flanges						
Joint Series	A Flange Diameter	Part No. Companion Flange Assembly	Part No. Companion Flange	G End of Hub to Flange Face Length	C Pilot Diameter F-Female M-Male	Brake Size
1480/1550	Rectangular	—	53-106-2	$2\frac{7}{8}$ "	F-3 $\frac{3}{4}$ "	9 x 3 or 12 x 4



FULL ROUND



U-BOLT—BRG. STRAP—HALF ROUND

Series	Yoke Style	End Yoke Part Number	S End of Hub To Center Line Length	Momentary Joint Angle	Brake Size
1480	U-Bolt	3-4-8781	$4\frac{1}{64}$ "	$22\frac{1}{2}$ °	—
1480	Brg. Strap**	3-4-8931-2	$3\frac{29}{32}$ "	$23\frac{1}{2}$ °	—
1550	U-Bolt	4-4-4491	$4\frac{1}{64}$ "	$21\frac{1}{2}$ °	—
1550	Brg. Strap*	4-4-4491-1	$4\frac{1}{64}$ "	$21\frac{1}{2}$ °	—
1550	Brg. Strap**	4-4-4491-2	$4\frac{1}{64}$ "	$21\frac{1}{2}$ °	—
1550	U-Bolt	4-4-4601	$6\frac{27}{64}$ "	22°	12 x 4
1550	U-Bolt	4-4-4611	$4\frac{1}{64}$ "	$22\frac{1}{2}$ °	—
1550	Brg. Strap*	4-4-4611-1	$4\frac{1}{64}$ "	$22\frac{1}{2}$ °	—
1550	Brg. Strap**	4-4-4611-2	$4\frac{1}{64}$ "	$22\frac{1}{2}$ °	—
1550	Half Rnd.	(A) 4-4-6111-1X	$7\frac{1}{32}$ "	22°	12 x 4
1610	Full Rnd.	5-4-6321	4"	19°	—
1610	Half Rnd.	5-4-6321-1	4"	19°	—
1610	Full Rnd.	5-4-6481	$4\frac{1}{64}$ "	$22\frac{1}{2}$ °	—
1610	Half Rnd.	5-4-6481-1	$4\frac{1}{64}$ "	$22\frac{1}{2}$ °	—
1610	Full Rnd.	5-4-6491	$6\frac{2}{32}$ "	22°	12 x 4
1610	Half Rnd.	(A) 5-4-7611-1X	$7\frac{9}{16}$ "	22°	12 x 4
1710	Full Rnd.	6-4-7301	$5\frac{1}{4}$ "	$33\frac{1}{2}$ °	—
1710	Half Rnd.	6-4-7301-1	$5\frac{1}{4}$ "	$33\frac{1}{2}$ °	—

(A) Assembly Includes Brake Drum

*With Tapped Holes

**With Thru Holes

MODEL CM40

MDES-0521-0799

CLUTCH RELEASE CODE TABLE

Rel.Code See Tab Bill	CR-7 Yoke ★	Shaft		CR-6 Pedal Adjusting Arm	Rel.Code See Tab Bill	CR-7 Yoke ★	Shaft		CR-6 Pedal Adjusting Arm
		CR-1 Short	CR-2 Long				CR-1 Short	CR-2 Long	
1	105C-64	106C-1142	106C-1047	310233X	58	105C-137	106C-1141	106C-1169	310233X
2	105C-64	106C-1185	106C-438	—	59	105C-137	106C-1185	106C-438	—
3	105C-64	106C-1185	106C-939	310233X	60	105C-137	106C-1185	106C-617	310233X
4	105C-64	106C-1185	106C-1046	310233X	61	105C-137	106C-1185	106C-839	310233X
5	105C-64	106C-1185	106C-1047	310233X	62	105C-137	106C-1185	106C-939	310233X
6	105C-64	106C-1185	106C-1047	47-526-1-1X	63	105C-137	106C-1185	106C-939	310473X
7	105C-64	106C-1544	106C-839	310233X	64	105C-137	106C-1185	106C-953	310473X
					65	105C-137	106C-1185	106C-1046	310233X
8	105C-68	106C-1142	106C-438	—	66	105C-137	106C-1185	106C-1046	310473X
9	105C-68	106C-1142	106C-617	—	67	105C-137	106C-1185	106C-1047	310233X
10	105C-68	106C-1142	106C-617	310233X	68	105C-137	106C-1185	106C-1083	310233X
11	105C-68	106C-1142	106C-839	310233X	69	105C-137	106C-1185	106C-1094	—
12	105C-68	106C-1142	106C-939	310233X	70	105C-137	106C-1185	106C-1094	310233X
13	105C-68	106C-1142	106C-1046	310233X	71	105C-137	106C-1185	106C-1123	—
14	105C-68	106C-1142	106C-1047	310233X	72	105C-137	106C-1185	106C-1123	310233X
15	105C-68	106C-1278	106C-438	—	73	105C-137	106C-1185	106C-1367	—
					74	105C-137	106C-1185	106C-1367	310233X
16	105C-117	106C-1071	106C-939	310233X	75	105C-137	106C-1185	106C-1375	310873X
17	105C-117	106C-1071	106C-1094	310233X	76	105C-137	106C-1185	106C-1515	—
18	105C-117	106C-1142	106C-939	310233X	77	105C-137	106C-1185	106C-1529	—
19	105C-117	106C-1185	106C-438	—	78	105C-137	106C-1185	330610-5	—
20	105C-117	106C-1185	106C-617	310233X	79	105C-137	106C-1216	106C-617	310233X
21	105C-117	106C-1185	106C-839	47-526-1-1X	80	105C-137	106C-1278	106C-438	—
22	105C-117	106C-1185	106C-939	310233X	81	105C-137	106C-1278	106C-588	—
23	105C-117	106C-1185	106C-953	310873X	82	105C-137	106C-1278	106C-588	310233X
24	105C-117	106C-1185	106C-960	310233X	83	105C-137	106C-1278	106C-617	310233X
25	105C-117	106C-1185	106C-1046	310233X	84	105C-137	106C-1278	106C-939	310233X
26	105C-117	106C-1185	106C-1047	310233X	85	105C-137	106C-1278	106C-939	310873X
27	105C-117	106C-1185	106C-1083	—	86	105C-137	106C-1278	106C-960	310233X
28	105C-117	106C-1185	106C-1083	310233X	87	105C-137	106C-1278	106C-1046	—
29	105C-117	106C-1185	106C-1083	310473X	88	105C-137	106C-1278	106C-1046	310233X
30	105C-117	106C-1185	106C-1094	310233X	89	105C-137	106C-1278	106C-1047	—
31	105C-117	106C-1185	106C-1094	310873X	90	105C-137	106C-1278	106C-1047	310233X
32	105C-117	106C-1185	106C-1169	310233X	91	105C-137	106C-1278	106C-1083	310233X
33	105C-117	106C-1185	106C-1315	—	92	105C-137	106C-1278	106C-1094	310233X
34	105C-117	106C-1185	106C-1315	310233X	93	105C-137	106C-1278	106C-1375	310233X
35	105C-117	106C-1185	106C-1315	47-526-1-1X	94	105C-137	106C-1278	106C-1422	310233X
36	105C-117	106C-1185	106C-1417	310233X	95	105C-137	106C-1278	106C-1529	—
37	105C-117	106C-1185	106C-1417	310873X	96	105C-137	106C-1360	106C-1083	—
38	105C-117	106C-1185	106C-1490	310233X	97	105C-137	106C-1360	106C-1422	310233X
39	105C-117	106C-1278	106C-939	310233X	98	105C-137	106C-1375	106C-438	310233X
40	105C-117	106C-1278	106C-960	310873X	99	105C-137	106C-1498	106C-438	—
41	105C-117	106C-1278	106C-1047	310233X	100	105C-137	106C-1498	106C-617	310233X
42	105C-117	106C-1278	106C-1094	310233X	101	105C-137	106C-1498	106C-617	310473X
43	105C-117	106C-1278	106C-1315	310233X	102	105C-137	106C-1498	106C-939	310233X
44	105C-117	106C-1278	106C-1367	310233X	103	105C-137	106C-1498	106C-939	310473X
45	105C-117	106C-1360	106C-1083	310233X	104	105C-137	106C-1498	106C-953	310233X
46	105C-117	106C-1360	106C-1315	310233X	105	105C-137	106C-1498	106C-959	310233X
47	105C-117	Thru Shaft	106C-1550	—	106	105C-137	106C-1498	106C-1046	310233X
48	105C-117	Thru Shaft	106C-1558	—	107	105C-137	106C-1498	106C-1047	—
					108	105C-137	106C-1498	106C-1047	310233X
49	105C-124	106C-1185	106C-438	—	109	105C-137	106C-1498	106C-1083	310233X
50	105C-124	Thru Shaft	106C-1566	310233X	110	105C-137	106C-1498	106C-1094	—
51	105C-124	Thru Shaft	106C-1566	310473X	111	105C-137	106C-1498	330610-11	310233X
52	105C-124	Thru Shaft	106C-1566	310873X	112	105C-137	330601-1	106C-939	310233X
52A	105C-124	Thru Shaft	49-510-1	310233X					
53	105C-132	106C-1185	106C-1047	310233X	113	85-509-3	106C-1360	106C-1417	310233X
54	105C-132	106C-1185	106C-1083	310233X	114	85-509-3	Thru Shaft	106C-1578	310233X
55	105C-132	106C-1185	106C-1417	310873X	115	85-509-3	Thru Shaft	106C-1578	310873X
56	105C-132	106C-1185	46-510-9	—					
57	105C-132	106C-1278	46-510-9	—	116	312916	Thru Shaft	97-510-2	—

■ Use Clutch Release Bearing 7743X

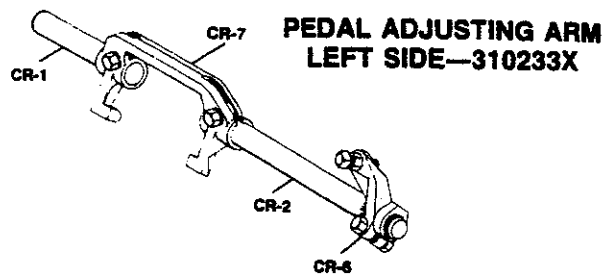
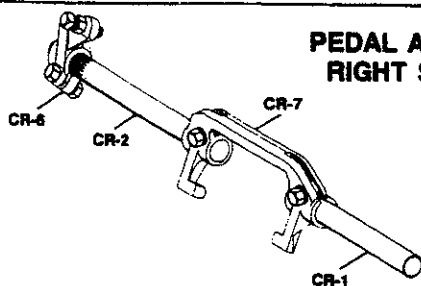
★ CLUTCH RELEASE YOKE ATTACHING PARTS—Use one KEY 10-30, two SCREWS 330231 and two LOCK WASHERS 500356-12

PARTS LISTED IN THIS CATALOG MAY NO LONGER BE AVAILABLE, USE WITH TRANSMISSION SUPERSEDING LIST.

MODEL CM40

CLUTCH RELEASE CODE TABLE

MDES-0521-0799

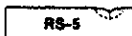


CR-1 SHORT SHAFT

Part No.	Length
106C-1071	4.062"
106C-1141	5.125"
106C-1142	6.125"
106C-1185	5.750"
106C-1216	4.750"
106C-1278	4.812"
106C-1360	5.312"
106C-1375	6.781"
106C-1498	6.500"
106C-1544	7.000"
330601-1	6.250"

CR-2 LONG SHAFT (Cont'd)

Part No.	Type	Length
106C-1083	RS-8	7.969"
106C-1094	RS-8	8.469"
106C-1123	RS-8	12.968"
106C-1169	RS-8	9.125"
106C-1315	RS-8	7.625"
106C-1367	RS-8	10.312"
106C-1375	RS-8	6.781"
106C-1417	RS-8	7.250"
106C-1422	RS-8	7.500"
106C-1490	RS-8	16.000"
106C-1515	RS-5	11.375"
106C-1529	RS-5	8.312"
330610-5	RS-8	9.469"
330610-11	RS-8	10.750"
46-510-9	RS-5	7.125"



CR-2 LONG SHAFT

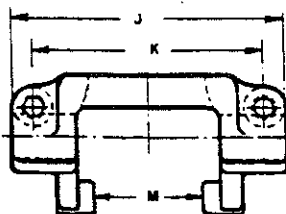
Part No.	Type	Length
106C-438	RS-5	14.000"
106C-588	RS-5	7.000"
106C-617	RS-8	10.469"
106C-839	RS-8	11.469"
106C-939	RS-8	10.000"
106C-953	RS-8	9.750"
106C-959	RS-8	11.968"
106C-960	RS-8	8.719"
106C-1046	RS-8	8.968"
106C-1047	RS-8	9.469"

CR-6 PEDAL ADJ. ARM

310233X	For Left Side Mtg.
310473X	For Right Side Mtg.
47-526-1-1X	Lever Type 7/4"
310873X	Lever Type 7/4"
■Lever type can be used on either right or left side.	

THRU SHAFT (used with Push Type Clutch)

Part No.	Type	Length
106C-1566	Splined	19.125"
106C-1550	Keyed	16.375"
106C-1558	Keyed	19.000"
106C-1578	Splined	19.500"
49-510-1	Keyed	19.120"
97-510-2	Splined	19.313"



CLUTCH RELEASE YOKES

CR-7	Forging No.	Used With	Type	J	K	M
105C-64	F105C64	Spicer 15½" SP	Pull	8.000"	6.500"	4.895"
105C-68	F105C99	Spicer 14" SP	Pull	7.125"	5.750"	4.132"
105C-117 ¹	F105C118	Spicer & Others	Push	8.375"	7.000"	4.885"
105C-124 ²	F105C125	Spicer AL & AR	Push	3.750"	2.125"	2.885"
105C-132 ²	F105C118	Spicer & Others	Push	8.375"	7.000"	4.885"
105C-137	F105C138	Spicer 13" and	Pull	8.000"	6.500"	4.895"
	C105C138	14" 2P				
85-509-3 ³	F105C118	Spicer & Others	Push	8.375"	7.000"	4.885"

¹Machined washer surface on yoke front

²Machined washer surface on yoke rear (for clearance)

³Same as ¹ above except contains spring holes in lugs

■Use 7743X Clutch Release Bearing

★ CLUTCH RELEASE YOKE ATTACHING PARTS—

Use one KEY 10-30, two SCREWS 330231 and two LOCK WASHERS 500356-12

NOTE: When changing from a two plate to single plate clutch or vice versa, a different bearing cap will be required.

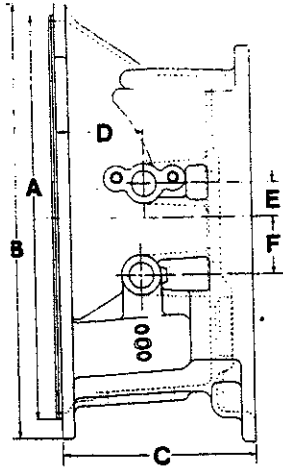
PARTS LISTED IN THIS CATALOG MAY NO LONGER BE AVAILABLE, USE WITH TRANSMISSION SUPERSEDING LIST.

MODEL CM40

MDES-0521-0799

CLUTCH HOUSING DIMENSIONS

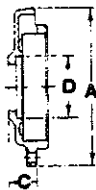
SAE		
Size No.	A Pilot Dia.	B O.D.
1	20 $\frac{1}{8}$ "	21 $\frac{3}{4}$ "
2	17 $\frac{5}{8}$ "	19 $\frac{1}{4}$ "
3	16 $\frac{1}{8}$ "	17 $\frac{3}{4}$ "



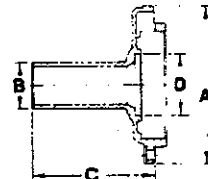
CLUTCH HOUSING					RELEASE SHAFT HOLE			
Assembly No. E-1 or E-2	Service No.	Casting No.	S A E	C Length	Dia.	D C/L to Front Face	E Above C/L	F Below C/L
* 40-518-1-2X	49-518-4-2X	C40-518-2	2	6.000"	1"	{ 3.750" 3.594"	1.500"	—
40-518-3-2X	49-518-7-2X	C40-518-4	2	4.750"	1"	—	—	—
* 40-518-5-2X	49-518-5-2X	C40-518-2-1	2	6.500"	1"	{ 3.750" 2.563"	1.500"	—
40-518-9-1X	49-518-6-1X	C40-518-4-1	2	6.802"	—	—	—	—
46-518-21-1X	46-518-21-1X	C102C-477	3	5.312"	1"	{ 3.750" 2.531"	1.500"	—
49-518-4-2X	49-518-4-2X	C40-518-2	2	8.552"	1"	{ 3.750" 3.594"	1.500"	—
* 49-518-5-2X	49-518-5-2X	C40-518-2-1	2	6.500"	1"	{ 3.750" 2.563"	1.500"	—
49-518-6-1X	49-518-6-1X	C40-518-4-1	2	6.802"	—	—	—	—
49-518-7-2X	49-518-7-2X	C40-518-4	2	4.750"	1"	—	—	—

* Includes (A) 128C-20 release shaft bushings

FLAT TYPE



STEM TYPE



DRIVE GEAR BEARING CAP CHART

A Outside Diameter	B Stem Diameter	C Length	Cap Number	FRONT BEARING CAP F-1	
				Assy. Includes Oil Seal	Service No.
FLAT TYPE—For Pull Type Clutches					
5 $\frac{5}{16}$ "	—	1 $\frac{7}{16}$ "	40-19-26	40-19-26-1X	Pull Type Release 40-19-40-1X
5 $\frac{5}{16}$ "	—	1 $\frac{11}{64}$ "	40-19-40	40-19-40-1X	40-19-40-1X
STEM TYPE—For all Push Type Clutches					
5 $\frac{5}{16}$ "	1 $\frac{15}{16}$ "	6 $\frac{17}{64}$ "	40-19-1	40-19-1-1X	40-19-1-1X
5 $\frac{1}{8}$ "	1 $\frac{3}{4}$ "	4 $\frac{9}{64}$ "	40-19-3	40-19-3-1X	40-19-3-1X
5 $\frac{5}{16}$ "	1 $\frac{7}{8}$ "	5 $\frac{43}{64}$ "	40-19-5	40-19-5-1X	40-19-5-1X
5 $\frac{1}{4}$ "	1 $\frac{7}{8}$ "	4 $\frac{3}{8}$ "	40-19-6	40-19-6-1X	40-19-6-1X
5 $\frac{5}{16}$ "	1 $\frac{7}{8}$ "	6 $\frac{21}{32}$ "	40-19-24	40-19-24-1X	40-19-24-1X
5 $\frac{1}{8}$ "	1 $\frac{15}{16}$ "	6 $\frac{17}{64}$ "	40-19-29	40-19-29-1X	40-19-29-1X
5 $\frac{1}{8}$ "	1 $\frac{7}{8}$ "	5 $\frac{43}{64}$ "	40-19-30	40-19-30-1X	40-19-30-1X
5 $\frac{5}{16}$ "	1 $\frac{7}{8}$ "	6 $\frac{21}{32}$ "	40-19-31	40-19-31-1X	40-19-31-1X
5 $\frac{5}{16}$ "	1 $\frac{7}{8}$ "	4 $\frac{59}{64}$ "	40-19-32	40-19-32-1X	40-19-32-1X
5 $\frac{5}{16}$ "	1 $\frac{7}{8}$ "	6 $\frac{21}{32}$ "	40-19-35	40-1-35-1X	40-19-35-1X

PARTS LISTED IN THIS CATALOG MAY NO LONGER BE AVAILABLE, USE WITH TRANSMISSION SUPERSEDING LIST.

MODEL CM40

OVERHAUL KITS

MDES-0521-0799

Part Number	Part Description	Qty.
	MAJOR OVERHAUL KIT	
313400-46X	MAJOR OVERHAUL KIT	1
501200	Nut—mainshaft output	1
313401-27X	Thrust Washer Kit	1
313429-7X	Shifter Housing Small Parts Kit	1
313432-11X	Minor Overhaul Kit	1
	MINOR OVERHAUL KIT (Included In Major Overhaul Kit)	
313432-11X	MINOR OVERHAUL KIT	1
	BEARINGS	
550962	Mainshaft Pocket	1
550989	Mainshaft Rear Cone	1
550989	Drive Gear Front	
550963	Mainshaft 1st & reverse	2
550886	Reverse Idler Gear	2
550964	Countershaft Front—cone	1
550965	Countershaft Front—cup	1
550966	Countershaft Rear—cone	1
550967	Countershaft Rear—cup	1
550968	Mainshaft 2nd Needle	1
40-486-1	Clip—shift fork (2nd & 3rd); (4th & 5th)	4
46-486-2	Clip—shift fork (1st & reverse)	2
49-486-2	Clip—shift fork (1st & reverse)	2
49-486-3	Clip—shift fork (1st & reverse)	2
40-463-4-1X	Seal—drive gear (flat type)	1
40-463-6-1X	Seal—drive gear (stem type)	1
63-463-1	Seal—mainshaft rear	1
545077	#2 Moly Grease (Packet)	1
545080-1	Locite-threadlock adhesive (Vail)	1
312475-40X	Gasket Kit	1
313438-1X	Shim Kit—countershaft rear	1
313024-14X	Snap Ring—kit	1
2363	Service Manual	1
2770	Bulletin—bearing lube instruction	1
2783	Bulletin—Locite application for mainshaft nut	1
2813	Bulletin—mainshaft rear bearing replacement	1
	(Included In Major Overhaul Kit)	
313401-27X	THRUST WASHER KIT	1
974-W	Reverse Idler	2
40-47-3	Mainshaft—3rd & 4th speed	1
40-47-2	Mainshaft—1st & 2nd speed	1
49-47-3	Mainshaft—reverse	1
545087	Pin—lock	2
313429-7X	SHIFTER HOUSING SMALL PARTS	1
101-438-4	Poppet Plunger	3
40-80-1	Poppet Ball	3
40-487-1	Insert—poppet spring and ball	3
40-438-1	Pin—1st and reverse select plunger	1
97-72-23	Spring—shift bar poppet	3
62-72-8	Spring—1st & reverse shift finger plunger	1
2823	Bulletin—shift bar assembly & poppet plunger	1

PARTS LISTED IN THIS CATALOG MAY NO LONGER BE AVAILABLE, USE WITH TRANSMISSION SUPERSEDING LIST.

MODEL CM40

OVERHAUL KITS

MDES-0521-0799

Part No.	Part Description	Qty.
	(Included In Major Overhaul Kit)	
312475-40X	GASKET KIT	1
40-223-1	Mainshaft Rear Bearing Cap	1
40-223-3	Mainshaft Rear Bearing Cap (D.C.M. Brake)	1
97-324-1-1X	P.T.O. Aperture Cover	2
49-324-1-1X	Reverse Idler Cover	1
40-155-1	Tower	1
545056-9	Anaerobic Sealant	1
2792	Bulletin—liquid gasket	1
313024-14X	SNAP RING KIT	1
40-381-2	Mainshaft 3rd & 4th Thrust Washer	1
40-381-3	Countershaft Head End Gear	1
40-381-3	Mainshaft 2nd & 3rd Clutch Gear	1
40-381-4	Mainshaft 1st & 2nd Thrust Washer	1
40-381-5	Countershaft 4th Gear	1
46-381-1	Mainshaft Front Bearing	1
40-381-1	4th & 5th Clutch Gear	1
40-381-6	Drive Gear Pocket Bearing	1
2807	Bulletin—CM-40 drive gear replacement	1
2811	Bulletin—2nd speed bearing overall	1
313438-1X	SHIM KIT	1
40-228-1-3	Countershaft Rear Bearing (.0165/.0135)	1
40-228-1-2	Countershaft Rear Bearing (.1110/.0090)	1
40-228-1-1	Countershaft Rear Bearing (.0055/.0045)	1
2793	Bulletin—countershaft shim kit	1
40-463-4-1X	SUB-ASSEMBLY—OIL SEAL & INSTALLATION SLEEVE (FLAT CAP) ...	1
2819	Bulletin—oil seal installation instruction	1
40-463-4	Seal—drive gear bearing cap	1
40-204-1	Sleeve—oil seal installation (1.75 diameter shaft)	1
40-463-6-1X	SUB-ASSEMBLY—OIL SEAL & INSTALLATION SLEEVE (STEM CAP) ..	1
2819	Bulletin—oil seal installation instruction	1
40-463-6	Seal—drive gear bearing cap	1
40-204-2	Sleeve—oil seal installation (1.500 diameter)	1
40-204-3	Sleeve—oil seal installation (1.375 diameter)	1
97-324-1-1X	KIT—GASKET 6 BOLT P.T.O.	1
97-324-1	Gasket—P.T.O. aperture cover	1
330950	Tag—instruction (service gaskets)	1
49-324-1-1X	KIT—GASKET-REVERSE IDLER COVER	1
49-324-1	Gasket—reverse idler cover	1
330950	Tag—instruction (service gaskets)	1

PARTS LISTED IN THIS CATALOG MAY NO LONGER BE AVAILABLE, USE WITH TRANSMISSION SUPERSEDING LIST.

MODEL CM40

MDES-0521-0799

TABULATED BILLS OF MATERIAL

Tab No.	Used By	For Use With Clutch 13" or 14" Single or 2PL	CLUTCH HOUSING			Main Drive Gear A-1	Drive Gear Bearing Cap F-1	Main Case Assembly G-1
			S A E	Assembly No. E-1	Rel. Code			
Model 4054-A								
301329								
-1	Never released for production							
-2	Ford	Push Type	2	40-518-1-2X	—	40-35-12	40-19-1-1X	40-15-6-1X
-3	Ford	Push Type	—	40-360-1-1X	—	40-35-11	40-19-3-1X	40-15-6-1X
-4	Never released for production							
-5	Fabrication	Push Type	2	40-518-1-2X	52	40-35-12	40-19-24-1X	40-15-6-1X
-6	Australia	Pull Type	2	40-518-5-2X	—	40-35-15	40-19-26-1X	40-15-6-1X
-7	Tree Farmer	Push Type	3	46-518-21-1X 40-360-1-1X	—	40-35-12	40-19-29-1X	40-15-6-1X
-8	Corbas Fran	Push Type	2	40-518-9-1X	—	40-35-13	40-19-32-1X	40-15-6-1X
-9	Navistar	Push Type	2	40-518-5-2X	—	40-35-12	40-19-35-1X	40-15-9-1X
-10	Ardco Ind.	Push Type	2	40-518-1-2X	—	40-35-12	40-19-24-1X	40-15-6-1X
-11	Timber Jack	Push Type	3	46-518-21-1X 40-360-1-1X	49	40-35-12	40-19-29-1X	40-15-6-1X
-12	Ford	Push Type	2	40-518-1-2X	—	40-35-12	40-19-1-1X	40-15-6-1X
-13	Ford	Push Type	—	40-360-1-1X	—	40-35-11	40-19-3-1X	40-15-6-1X
-14	Ford	Pull Type	2	40-518-1-2X	—	40-35-15	40-19-26-1X	40-15-6-1X
-15	General	Pull Type	2	40-518-1-2X	—	40-35-15	40-19-26-1X	40-15-6-1X
-16	Litton Resource	Push Type	2	40-518-5-2X	50	40-35-12	40-19-24-1X	40-15-6-1X
-17	Spicer U.K.	Push Type	—	40-360-1-1X	—	40-35-11	40-19-3-1X	40-15-6-1X
-18	Corbas Fran	Push Type	2	40-518-9-1X	—	40-35-13	40-19-32-1X	40-15-6-1X
-19	Corbas Fran	Push Type	2	40-518-9-1X	—	40-35-13	40-19-32-1X	40-15-6-1X
-20	Navistar	Push Type	2	40-518-5-2X	—	40-35-12	40-19-35-1X	40-15-9-1X
-21	Ford	Push Type	—	40-360-1-1X	—	40-35-11	40-19-3-1X	40-15-6-1X
-22	Ford	Push Type	—	40-360-1-1X	—	40-35-11	40-19-3-1X	40-15-6-1X
-23	Ford	Push Type	—	40-360-1-1X	—	40-35-11	40-19-3-1X	40-15-6-1X
-24	Ford	Push Type	2	40-518-1-2X	—	40-35-12	40-19-19-1X	40-15-6-1X
-25	Ford	Push Type	2	40-518-1-2X	—	40-35-12	40-19-1-1X	40-15-6-1X
-26	GMC	Push Type	—	40-360-3-1X	—	40-35-14	40-19-6-1X	40-15-8-1X
-27	Navistar	Push Type	2	40-518-5-2X	—	40-35-12	40-19-35-1X	40-15-9-1X
-28	Cummins	Push Type	3	46-518-21-1X 40-360-1-1X	50	40-35-12	40-19-30-1X	40-15-6-1X
Model 4054-A								
301420								
-1	Never released for production							
-2	Never released for production							
-3	Never released for production							
-4	Never released for production							
-5	Fabrication	Push Type	2	49-518-4-2X	52	40-35-12	40-19-24-1X	40-15-6-1X
-6	Spicer Australia	Pull Type	2	49-518-5-2X	—	40-35-15	40-19-40-1X	40-15-6-1X
-7	Tree Farmer	Push Type	3	46-518-21-1X 49-360-3-1X	—	40-35-12	40-19-29-1X	40-15-6-1X
-8	Corbas Fran	Push Type	2	49-518-6-1X	—	40-35-12	40-19-32-1X	40-15-6-1X
-9	Navistar	Push Type	2	49-518-5-2X	—	40-35-12	40-19-35-1X	40-15-9-1X
-10	Ardco Ind.	Push Type	2	49-518-4-2X	—	40-35-12	40-19-24-1X	40-15-6-1X
-11	Timber Jack	Push Type	3	46-518-21-1X 49-360-3-1X	49	40-35-12	40-19-29-1X	40-15-6-1X
-12	Ford	Push Type	2	49-518-4-2X	—	40-35-12	40-19-1-1X	40-15-6-1X
-13	Ford	Push Type	—	49-360-3-1X	—	40-35-11	40-19-3-1X	40-15-6-1X
-14	Ford	Pull Type	2	49-518-4-2X	—	40-35-15	40-19-40-1X	40-15-6-1X
-15	General	Pull Type	2	49-518-4-2X	—	40-35-15	40-19-40-1X	40-15-6-1X
-16	Litton Resource	Pull Type	2	49-518-5-2X	50	40-35-12	40-19-24-1X	40-15-6-1X
-17	Never released for production							
-18	Corbas Fran	Push Type	2	49-518-6-1X	—	40-35-13	40-19-32-1X	40-15-6-1X
-19	Corbas Fran	Pull Type	2	49-518-6-1X	—	40-35-13	40-19-32-1X	40-15-6-1X
-20	Navistar	Pull Type	2	49-518-5-2X	—	40-35-12	40-19-35-1X	40-15-9-1X
-21	Ford	Pull Type	—	49-360-3-1X	—	40-35-11	40-19-3-1X	40-15-6-1X

PARTS LISTED IN THIS CATALOG MAY NO LONGER BE AVAILABLE, USE WITH TRANSMISSION SUPERSEDING LIST.

MODEL CM40

TABULATED BILLS OF MATERIAL

MDES-0521-0799

Tab No..	Rear Bearing Cap Assembly Cap, Seal and Bushing H-1	SPEEDOMETER		End Yoke or Companion Flange (page 13)	SHIFTER	
		Drive Gear B-23	Driven Gear H-8		Lever & Dome Ass'y (page 15)	Remote Control (page 17)
Model 4054-A						
301329						
-1	Never released for production					
-2	40-19-39-1X	—	—	—	—	—
-3	40-19-39-1X	—	—	—	—	—
-4	Never released for production					
-5	40-19-38-2X	53-452-3	62-453-4	4-4-4491	—	40-18-1-2X
-6	40-19-38-2X	53-452-4	53-453-2	5-4-6321	—	40-18-1-2X
-7	40-19-38-2X	—	—	3-4-8781	—	—
-8	40-19-38-2X	53-452-4	53-453-2	4-4-5221	40-17-3-5X	—
-9	40-19-22-2X	53-452-3	—	—	—	—
-10	40-19-38-2X	—	—	—	40-17-1-12X	—
-11	40-19-38-2X	—	—	3-4-8781	—	—
-12	40-19-39-1X	—	—	—	—	—
-13	40-19-39-1X	—	—	—	—	—
-14	40-19-39-1X	—	—	—	—	—
-15	40-19-39-1X	—	—	4-4-4611	40-17-1-12X	—
-16	40-19-38-2X	53-452-4	53-453-2	—	40-17-1-12X	—
-17	40-19-38-2X	53-452-4	53-453-2	53-106-2	—	40-18-1-2X
-18	40-19-38-2X	53-452-4	53-453-2	4-4-5221	—	40-18-1-2X
-19	40-19-19-2X	53-452-4	53-453-2	—	—	40-18-1-2X
-20	40-19-38-2X	53-452-3	—	—	—	—
-21	40-19-39-1X	53-452-6	—	4-4-4611-2	—	—
-22	40-19-39-1X	53-452-6	—	3-4-8931-2	—	—
-23	40-19-39-1X	53-452-6	—	5-4-6481-1	—	—
-24	40-19-39-1X	53-452-6	—	4-4-4611-2	—	—
-25	40-19-39-1X	53-452-6	—	5-4-6481-1	—	—
-26	40-19-22-2X	53-452-3	—	—	—	—
-27	40-19-19-2X	53-452-3	—	—	—	—
-28	40-19-38-2X	53-452-4	53-453-2	3-4-8931-2	40-17-1-12X	—
Model 4054-A						
301420						
-1	Never released for production					
-2	Never released for production					
-3	Never released for production					
-4	Never released for production					
-5	40-19-38-2X	53-452-3	62-453-4	4-4-4491	—	40-18-1-2X
-6	40-19-38-2X	53-452-4	53-453-2	5-4-6321	—	40-18-1-2X
-7	40-19-38-2X	—	—	3-4-8781	—	—
-8	40-19-38-2X	53-452-4	53-453-2	4-4-5221	40-17-3-5X	—
-9	40-19-22-2X	—	—	—	—	—
-10	40-19-38-2X	—	—	—	40-17-1-12X	—
-11	40-19-38-2X	—	—	3-4-8781	—	—
-12	40-19-39-1X	—	—	—	—	—
-13	40-19-39-1X	—	—	—	—	—
-14	40-19-39-1X	—	—	—	—	—
-15	40-19-39-1X	—	—	4-4-4611	40-17-1-12X	—
-16	40-19-38-2X	53-452-4	53-453-2	—	40-17-1-12X	—
-17	Never released for production					
-18	40-19-38-2X	53-452-4	53-453-2	4-4-5221	—	40-18-1-2X
-19	40-19-19-2X	53-452-4	53-453-2	—	—	40-18-1-2X
-20	40-19-38-2X	53-452-3	—	—	—	—
-21	40-19-39-1X	53-452-6	—	4-4-4611-2	—	—

MODEL CM40

MDES-0521-0799

TABULATED BILLS OF MATERIAL

Tab No.	Used By	For Use With Clutch 13" or 14" Single or 2PL	CLUTCH HOUSING			Main Drive Gear A-1	Drive Gear Bearing Cap F-1	Main Case Assembly G-1
			S A E	Assembly No. E-1	Rel. Code			
Model 4054-A								
301420 (Cont'd)								
-22	Ford	Push Type	—	49-360-3-1X	—	40-35-11	40-19-3-1X	40-15-6-1X
-23	Ford	Push Type	—	40-360-3-1X	—	40-35-11	40-19-3-1X	40-15-6-1X
-24	Ford	Push Type	2	49-518-4-2X	—	40-35-12	40-19-1-1X	40-15-6-1X
-25	Ford	Push Type	2	49-518-4-2X	—	40-35-12	40-19-1-1X	40-15-6-1X
-26	GMC	Push Type	—	49-360-4-1X	—	40-35-14	40-19-6-1X	40-15-8-1X
-27	Navistar	Push Type	2	49-518-5-2X	—	40-35-12	40-19-35-1X	40-15-9-1X
-28	Cummins	Push Type	3	46-518-21-1X 49-360-8-1X	33	40-35-12	40-19-30-1X	40-15-6-1X
-29	Ford	Pull Type	2	49-518-4-2X	—	40-35-15	40-19-40-1X	40-15-6-1X
-30	Ford	Pull Type	2	49-518-4-2X	—	40-35-15	40-19-40-1X	40-15-6-1X
-31	Cummins	Push Type	3	46-518-21-1X 49-360-3-1X	50	40-35-12	40-19-31-1X	40-15-6-1X
-32	Cummins	Push Type	2	49-518-4-2X	50	40-35-12	40-19-1-1X	40-15-6-1X
Model 4054-D								
301343								
-1	Navistar	Push Type	2	40-518-5-2X	—	40-35-12	40-19-35-1X	40-15-9-1X
-2	Ford	Push Type	2	40-518-1-2X	—	40-35-12	40-19-1-1X	40-15-6-1X
-3	Ford	Push Type	—	40-360-1-1X	—	40-35-11	40-19-3-1X	40-15-6-1X
-4	Navistar	Push Type	2	40-518-5-2X	—	40-35-12	40-19-35-1X	40-15-9-1X
-5	Never released for production							
-6	Ford	Push Type	2	40-518-1-2X	—	40-35-12	40-19-1-1X	40-15-6-1X
-7	Ford	Push Type	—	40-360-1-1X	—	40-35-11	40-19-3-1X	40-15-6-1X
-8	Ford	Pull Type	2	40-518-1-2X	—	40-35-15	40-19-26-1X	40-15-6-1X
-9	Corbas Fran	Push Type	2	40-518-9-1X	—	40-35-13	40-19-32-1X	40-15-6-1X
-10	GMC	Push Type	—	40-360-3-1X	—	40-35-14	40-19-6-1X	40-15-8-1X
-11	Ford	Push Type	2	40-518-1-2X	—	40-35-12	40-19-1-1X	40-15-6-1X
-12	Ford	Push Type	—	40-360-1-1X	—	40-35-11	40-19-3-1X	40-15-6-1X
-13	Ford	Pull Type	2	40-518-1-2X	—	40-35-15	40-19-26-1X	40-15-6-1X
-14	Navistar	Push Type	2	40-518-5-2X	—	40-35-12	40-19-35-1X	40-15-9-1X
-15	Corbas Fran	Push Type	2	40-518-9-1X	—	40-35-13	40-19-32-1X	40-15-6-1X
-16	GMC	Push Type	2	40-518-3-2X	—	40-35-13	40-19-5-1X	40-15-8-1X
-17	Dina	Push Type	2	40-518-5-2X	50	40-35-12	40-19-24-1X	40-15-6-1X
-18	Ford	Push Type	—	40-360-1-1X	—	40-35-11	40-19-3-1X	40-15-6-1X
-19	Ford	Push Type	—	40-360-1-1X	—	40-35-11	40-19-3-1X	40-15-6-1X
-20	Ford	Push Type	—	40-360-1-1X	—	40-35-11	40-19-3-1X	40-15-6-1X
-21	Ford	Push Type	2	40-518-1-2X	—	40-35-12	40-19-1-1X	40-15-6-1X
-22	Ford	Push Type	2	40-518-1-2X	—	40-35-12	40-19-1-1X	40-15-6-1X
-23	Navistar	Pull Type	2	40-518-5-2X	—	40-35-16	40-19-26-1X	40-15-9-1X
-24	Famsa	Pull Type	2	40-518-5-2X	—	40-35-16	40-19-26-1X	40-15-9-1X
-25	GMC	Push Type	2	40-518-3-2X	—	40-35-13	40-19-5-1X	40-15-8-1X
-26	Navistar	Pull Type	2	40-518-5-2X	—	40-35-16	40-19-26-1X	40-15-9-1X
-27	Australia	Pull Type	2	40-518-5-2X	—	40-35-15	40-19-26-1X	40-15-6-1X
-28	Navistar	Pull Type	2	40-518-5-2X	—	40-35-16	40-19-26-1X	40-15-9-1X
Model 4054-D								
301421								
-1	Navistar	Push Type	2	49-518-5-2X	—	40-35-12	40-19-35-1X	40-15-9-1X
-2	Ford	Push Type	2	49-518-4-2X	—	40-35-12	40-19-1-1X	40-15-6-1X
-3	Ford	Push Type	—	49-360-3-1X	—	40-35-11	40-19-3-1X	40-15-6-1X
-4	Navistar	Push Type	2	49-518-5-2X	—	40-35-12	40-19-35-1X	40-15-9-1X
-5	Never released for production							
-6	Never released for production							
-7	Never released for production							
-8	Never released for production							
-9	Corbas Fran	Push Type	2	49-518-6-1X	—	40-35-13	40-19-32-1X	40-15-6-1X
-10	GMC	Push Type	—	49-360-4-1X	—	40-35-14	40-19-6-1X	40-15-8-1X

PARTS LISTED IN THIS CATALOG MAY NO LONGER BE AVAILABLE, USE WITH TRANSMISSION SUPERSEDING LIST.

MODEL CM40

TABULATED BILLS OF MATERIAL

MDES-0521-0799

Tab No.	Rear Bearing Cap Assembly Cap, Seal and Bushing H-1	SPEEDOMETER		End Yoke or Companion Flange (page 13)	SHIFTER	
		Drive Gear B-23	Driven Gear H-8		Lever & Dome Ass'y (page 15)	Remote Control (page 17)
Model 4054-A						
301420 (Cont'd)						
-22	40-19-39-1X	53-452-6	—	3-4-8931-2	—	—
-23	40-19-39-1X	53-452-6	—	5-4-6481-1	—	—
-24	40-19-39-1X	53-452-6	—	4-4-4611-2	—	—
-25	40-19-39-1X	53-452-6	—	5-4-6481-1	—	—
-26	40-19-22-2X	53-452-3	—	—	—	—
-27	40-19-19-2X	53-452-3	—	—	—	—
-28	40-19-38-2X	53-452-4	53-453-2	3-4-8781	40-17-1-12X	—
-29	40-19-39-1X	53-452-6	—	5-4-6481-1	—	—
-30	40-19-39-1X	53-452-6	—	4-4-4611-2	—	—
-31	40-19-38-2X	53-452-4	53-453-2	53-106-2	—	40-18-1-2X
-32	40-19-38-2X	53-452-4	53-453-2	53-106-2	—	40-18-1-2X
Model 4054-D						
301343						
-1	40-19-22-2X	53-452-3	—	—	—	—
-2	40-19-39-1X	—	—	—	—	—
-3	40-19-39-1X	—	—	—	—	—
-4	40-19-38-2X	53-452-3	—	—	—	—
-5	Never released for production					
-6	40-19-39-1X	—	—	—	—	—
-7	40-19-39-1X	—	—	—	—	—
-8	40-19-39-1X	—	—	—	—	—
-9	40-19-38-2X	53-452-4	53-453-2	4-4-5221	40-17-3-5X	—
-10	40-19-22-2X	53-452-3	—	—	—	—
-11	40-19-39-1X	—	—	—	—	—
-12	40-19-39-1X	—	—	—	—	—
-13	40-19-39-1X	—	—	—	—	—
-14	40-19-19-2X	53-452-3	—	—	—	—
-15	40-19-19-2X	53-452-4	53-453-2	—	40-17-3-5X	—
-16	40-19-38-2X	53-452-3	—	—	—	—
-17	40-19-38-2X	53-452-4	53-453-2	53-106-2	40-17-1-12X	—
-18	40-19-39-1X	53-452-6	—	4-4-4611-2	—	—
-19	40-19-39-1X	53-452-6	—	3-4-8931-2	—	—
-20	40-19-39-1X	53-452-6	—	5-4-6481-1	—	—
-21	40-19-39-1X	53-452-6	—	4-4-4611-2	—	—
-22	40-19-39-1X	53-452-6	—	5-4-6481-1	—	—
-23	40-19-22-2X	53-452-3	—	—	—	—
-24	40-19-38-2X	53-452-3	62-453-4	53-106-2	40-17-1-12X	—
-25	40-19-22-2X	53-452-3	—	—	—	—
-26	40-19-38-2X	53-452-3	—	—	—	—
-27	40-19-38-2X	53-452-4	53-453-2	4-4-4491	—	40-18-1-2X
-28	40-19-19-2X	53-452-3	—	—	—	—
Model 4054-D						
301421						
-1	40-19-22-2X	53-452-3	—	—	—	—
-2	40-19-39-1X	—	—	—	—	—
-3	40-19-39-1X	—	—	—	—	—
-4	40-19-38-2X	53-452-3	—	—	—	—
-5	Never released for production					
-6	Never released for production					
-7	Never released for production					
-8	Never released for production					
-9	40-19-38-2X	53-452-4	53-453-2	4-4-5221	40-17-3-5X	—
-10	40-19-22-2X	53-452-3	—	—	—	—

MODEL CM40

MDES-0521-0799

TABULATED BILLS OF MATERIAL

Tab No.	Used By	For Use With Clutch 13" or 14" Single or 2PL	CLUTCH HOUSING			Main Drive Gear A-1	Drive Gear Bearing Cap F-1	Main Case Assembly G-1
			S A E	Assembly No. E-1	Rel. Rel. Code			
Model 4054-A								
301421 (Cont'd)								
-11	Ford	Push Type	2	49-518-4-2X	—	40-35-12	40-19-1-1X	40-15-6-1X
-12	Ford	Push Type	—	49-360-3-1X	—	40-35-11	40-19-3-1X	40-15-6-1X
-13	Ford	Pull Type	2	49-518-4-2X	—	40-35-15	40-19-40-1X	40-15-6-1X
-14	Navistar	Push Type	2	49-518-5-2X	—	40-35-12	40-19-35-1X	40-15-9-1X
-15	Corbas Fran	Push Type	2	49-518-6-1X	—	40-35-13	40-19-32-1X	40-15-6-1X
-16	GMC	Push Type	2	49-518-7-2X	—	40-35-13	40-19-5-1X	40-15-8-1X
-17	Dina	Push Type	2	49-518-5-2X	—	40-35-12	40-19-24-1X	40-15-6-1X
-18	Ford	Push Type	—	49-360-3-1X	—	40-35-11	40-19-3-1X	40-15-6-1X
-19	Ford	Push Type	—	49-360-3-1X	—	40-35-11	40-19-3-1X	40-15-6-1X
-20	Ford	Push Type	—	49-360-3-1X	—	40-35-11	40-19-3-1X	40-15-6-1X
-21	Ford	Push Type	2	49-518-4-2X	—	40-35-12	40-19-1-1X	40-15-6-1X
-22	Ford	Push Type	2	49-518-4-2X	—	40-35-12	40-19-1-1X	40-15-6-1X
-23	Navistar	Pull Type	2	49-518-5-2X	—	40-35-16	40-19-40-1X	40-15-9-1X
-24	Famsa	Pull Type	2	49-518-5-2X	3	40-35-16	40-19-40-1X	40-15-9-1X
-25	GMC	Push Type	2	49-518-7-2X	—	40-35-13	40-19-5-1X	40-15-8-1X
-26	Navistar	Pull Type	2	49-518-5-2X	—	40-35-16	40-19-40-1X	40-15-9-1X
-27	Spicer Australia	Pull Type	2	49-518-5-2X	—	40-35-15	40-19-40-1X	40-15-6-1X
-28	Navistar	Pull Type	2	49-518-5-2X	—	40-35-16	40-19-40-1X	40-15-9-1X
-29	Ford	Pull Type	2	49-518-4-2X	—	40-35-15	40-19-40-1X	40-15-6-1X
-30	Ford	Pull Type	2	49-518-4-2X	—	40-35-15	40-19-40-1X	40-15-6-1X
-31	Hino Motors	Push Type	2	49-518-4-2X	50	40-35-12	40-19-24-1X	40-15-9-1X
-32	Tucker	Push Type	2	49-518-5-2X	—	40-35-12	40-19-35-1X	40-15-9-1X

PARTS LISTED IN THIS CATALOG MAY NO LONGER BE AVAILABLE, USE WITH TRANSMISSION SUPERSEDING LIST.

MODEL CM40

TABULATED BILLS OF MATERIAL

MDES-0521-0799

Tab No.	Rear Bearing Cap Assembly Cap, Seal and Bushing H-1	SPEEDOMETER			End Yoke or Companion Flange (page 13)	SHIFTER	
		Drive Gear B-23	Driven Gear H-8			Lever & done Ass'y (page 15)	Remote Control (page 17)
Model 4054-A							
301421 (Cont'd)							
-11	40-19-39-1X	—	—	—	—	—	—
-12	40-19-39-1X	—	—	—	—	—	—
-13	40-19-39-1X	—	—	—	—	—	—
-14	40-19-19-2X	53-452-3	—	—	—	—	—
-15	40-19-19-2X	53-452-4	53-453-2	—	—	40-17-3-5X	—
-16	40-19-38-2X	53-452-3	—	—	—	—	—
-17	40-19-38-2X	53-452-4	53-453-2	53-106-2	—	40-17-1-12X	—
-18	40-19-39-1X	53-452-6	—	4-4-4611-2	—	—	—
-19	40-19-39-1X	53-452-6	—	3-3-8931-2	—	—	—
-20	40-19-39-1X	53-452-6	—	5-4-6481-1	—	—	—
-21	40-19-39-1X	53-452-6	—	4-4-4611-2	—	—	—
-22	40-19-39-1X	53-452-6	—	5-4-6481-1	—	—	—
-23	40-19-22-2X	53-452-3	—	—	—	—	—
-24	40-19-38-2X	53-452-3	62-453-4	53-106-2	—	40-17-1-12X	—
-25	40-19-22-2X	53-452-3	—	—	—	—	—
-26	40-19-38-2X	53-452-3	—	—	—	—	—
-27	40-19-38-2X	53-452-4	53-453-2	4-4-4491-1	—	—	40-18-1-6X
-28	40-19-19-2X	53-452-3	—	—	—	—	—
-29	40-19-39-1X	53-452-6	—	5-4-6481-1	—	—	—
-30	40-19-39-1X	53-452-6	—	4-4-4611-1	—	—	—
-31	40-19-38-2X	53-452-4	53-453-2	53-106-2	—	—	40-18-1-2X
-32	40-19-22-2X	—	—	—	—	40-17-1-12X	—



14700 Helm Court
Plymouth, MI 48170
(800) 401-9866 or (734) 456-3770
Fax: (734) 456-3739
www.ttcautomotive.com

